

- Min. 20 micron anodized aluminum extruded profile
- Stainless connectors
- PVC side cover with UV protection
- Transparent or diffused polycarbonate top cover with UV protection
- Cooling capacity up to 21,6 W/m
- Suitable for surface mounting

## P W Product & Power Options

Product Name/LED Quantity	Light Color	Input Voltage (V)	Power (W/mt)	Luminous Flux (lm)	Weight (kg)
LLU 60LED	WW-NW-CW	24V DC	4,8	155	0,4
LLU 60LED	WW-NW-CW	24V DC	14,4	360	0,4
LLU 90LED	WW-NW-CW	24V DC	7,2	195	0,4
LLU 180LED	WW-NW-CW	24V DC	14,4	360	0,4
LLU 30LED	RGB	24V DC	7,2	-	0,4
LLU 45LED	RGB	24V DC	10,8	-	0,4
LLU 60LED	RGB	24V DC	14,4	-	0,4
LLU 90LED	RGB	24V DC	21,6	-	0,4
LLU 60LED	RGB/W	24V DC	14,4	-	0,4
LLU 30LED-DMX	RGB-Pixel	24V DC	8,4	-	0,4
LLU 45LED-DMX	RGB-Pixel	24V DC	12,6	-	0,4
LLU 30LED-DMX	RGBW/A-Pixel	24V DC	8,2	-	0,4

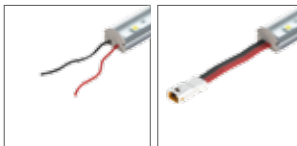
\*Power and Lumen values provided are based off of a coverless product with cold white (CW) LED.

## C Light Color Options

● WW: Warm White 3000K	● R: Red 625nm	● RGB
● NW: Natural White 4000K	● G: Green 525nm	● RGBW
● CW: Cold White 6500K	● B: Blue 465nm	● RGBA
● A: Amber 590nm		

\*Different colors are optional

## J Junction Options



01: Cable\*      02: IP Socket

\*IP66 products are socket only



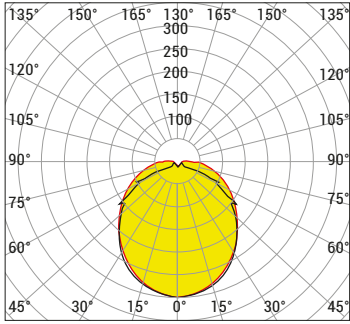
Order Code

P . W . C . J . U . I . M

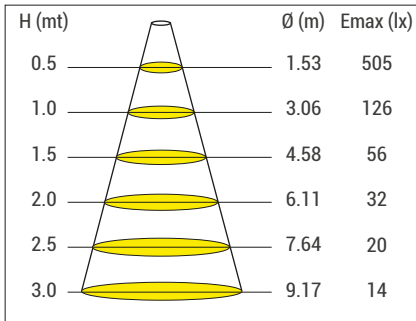


## Product Diagrams

Polar Diagram

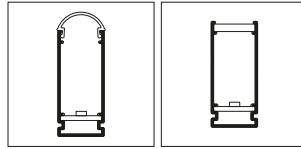


Conical Diagram



LLU CW 45 LED 120D 18W 24V DC IP44D

## U Upper Cover Options



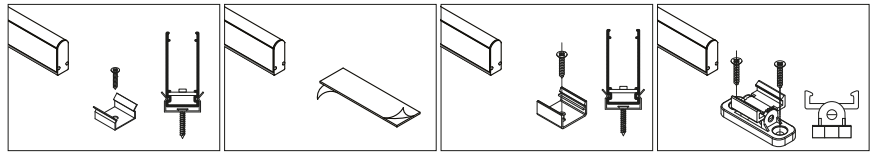
01: Diffused Oval  
(IP40/IP66)

39: Diffused Flat  
(IP40/IP66)

## I IP Protection Class



## M Mounting Options



01: Steel Clip

02: Double-Sided Tape

03: Aluminum Clip

05: Angled Clip

## Control System Options

Color Type	PWM	INV PWM	DMX	DALI	0-10V DC	TRIAC
WW-NW-CW	•			•	•	
R,G,B,A	•			•	•	
RGB	•					
RGBA/W	•		•			
RGB DMX			•			
WHITE DMX			•			

