

- 2,5 mm wall thickness electrostatic powder coated aluminum injection profile
- Stainless fittings
- Wide angle asymmetric lens
- Originally wide design of the product allows the fixture to cool effectively without any cooling fins

P W Product & Power Options

Product Name	Light Color	Input Voltage (V)	Power (W)	Luminous Flux (lm)	Weight** (kg)
KITE	WW-NW-CW	220-240V AC	40	4.910	3,9
KITE	WW-NW-CW	220-240V AC	60	7.654	4,0
KITE	WW-NW-CW	220-240V AC	80	9.934	4,0
KITE	WW-NW-CW	220-240V AC	100	12.100	4,0

*Power and Lumen values provided are based off of a "cold white (CW) LED".
 **Product weights are provided without the weight of the pole

C Light Color Options

● WW: Warm White	3000K
● NW: Natural White	4000K
● CW: Cold White	6500K

*Different colors are optional

S Driver Options

- 01 Standard Driver
- 06 DALI Driver

O Lens Options



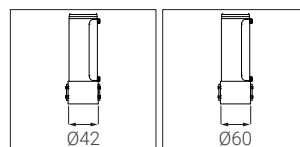
A: Asymmetrical Angle (90°x120°)

G Housing Color Options



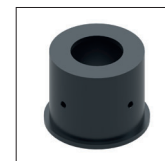
RAL9005 RAL9007 RAL9016

M Mounting Options



MK42: Ø42 MK60: Ø60

Accessory options



24011271

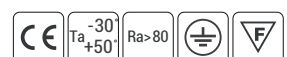
Mounting Accessory

* Can be mount on Ø60mm pole with mounting accessory



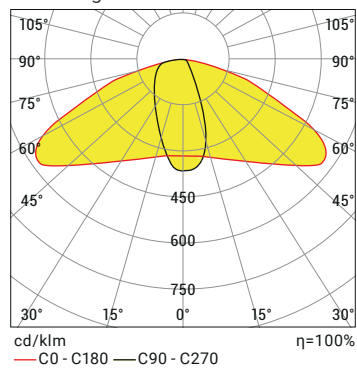
Order Code

P . W . C . S . O . G



Product Diagrams

Polar Diagram



Control System Options

	Color Type	PWM	INV PWM	DMX	DALI	0-10V DC	TRIAC
WW-NW-CW					•	•	
R,G,B,A							
RGB							
RGBA/W							
RGB DMX							
WHITE DMX							

