

- 2,5 mm wall thickness electrostatic powder coated aluminum injection body
- Polycarbonate injection PC diffuse cover
- Stainless fittings
- IP67 driver with 6kV surge immunity

P W Product & Power Options

Product Name	Light Color	Input Voltage (V)	Power (W)	Luminous Flux (lm)	Weight** (kg)
ARC SINGLE	WW-NW-CW	220-240V AC	40	3.300	3,2

*Power and Lumen values provided are based off of a "cold white (CW) LED".
 **Product weights are provided without the weight of the pole

C Light Color Options

● WW: Warm White	3000K
● NW: Natural White	4000K
● CW: Cold White	6500K

*Different colors are optional

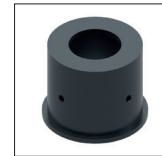
S Driver Options

- 01 Standard Driver
- 06 DALI Driver

G Housing Color Options



Accessory options



24011271
Mounting Accessory

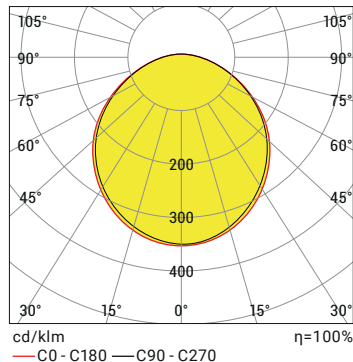
* Can be mount on Ø60mm pole with mounting accessory

Control System Options

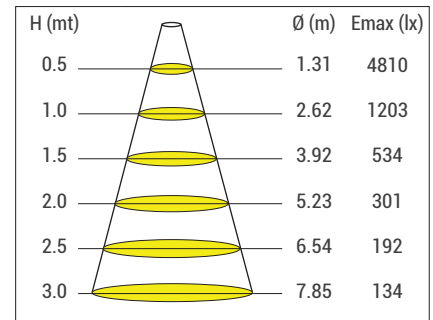
Color Type	PWM	INV PWM	DMX	DALI	0-10V DC	TRIAC
WW-NW-CW				●	●	
R,G,B,A						
RGB						
RGBA/W						
RGB DMX						
WHITE DMX						

Product Diagrams

Polar Diagram



Conical Diagram



ARC SINGLE NW40 40W 220VAC IP66



Order Code

P . W . C . S . G

