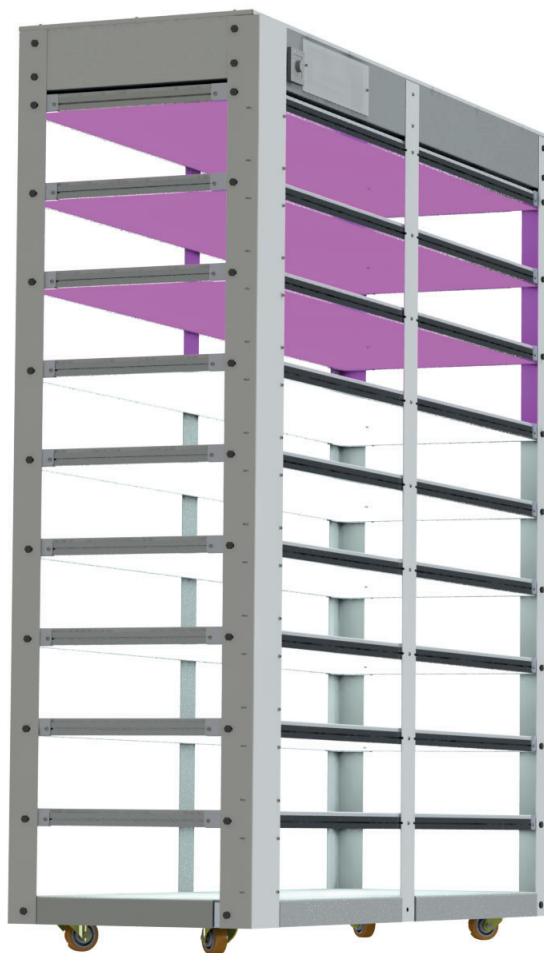


Grow PANEL

FULLY OPTIMIZED &
AUTOMATED
PROCESSES WITH THE BEST
FLEXIBILITY & EFFICIENCY



TISSUE CULTURE SOLUTIONS

Powerful option of Growlight family. TOPLIGHT segment aims general lighting range for greenhouses via ceiling mount. Suits for all greenhouse facilities. Controllable, easy to mount, automation ready, flexible spectrum on request GROWLIGHT solution.

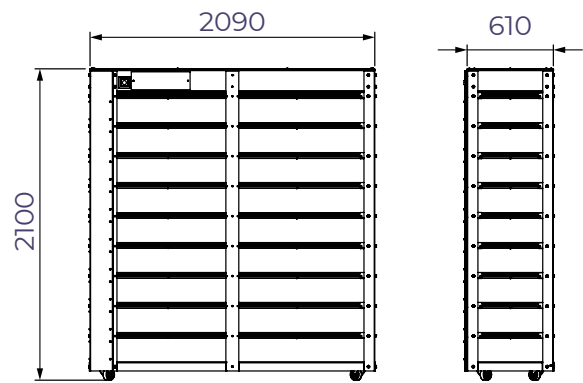


A better way to see!

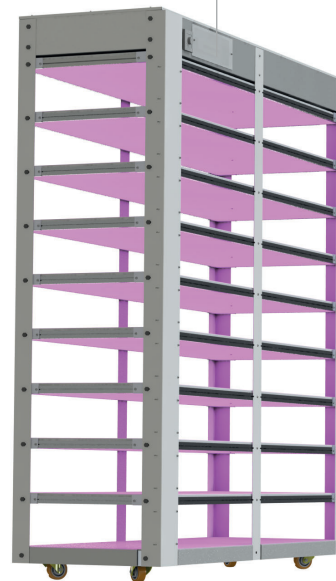
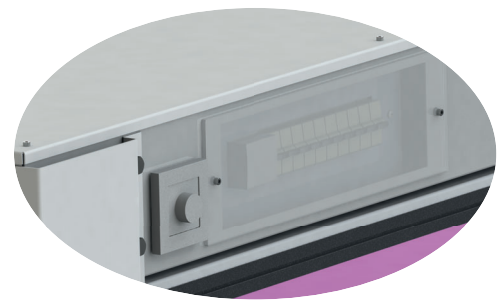
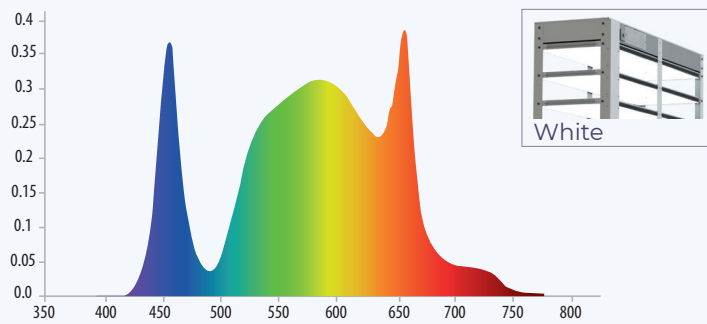
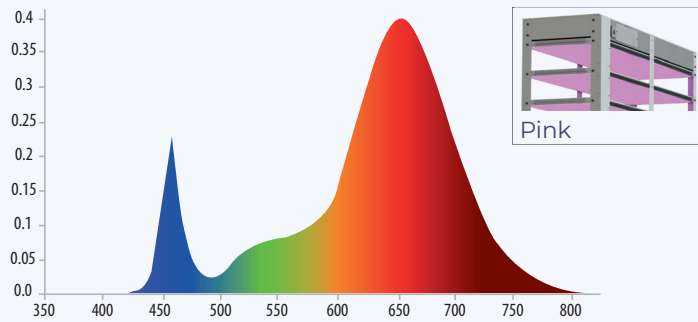
ELECTROMECHANIC SPECIFICATIONS

| | |
|---------------------|--|
| Voltage | 108-305 AC 50-60Hz |
| Watt | 45W/72W/165W (220V AC) |
| Amps at 220V | 3 A |
| Max Ambient temp | 40° |
| Power factor (cosØ) | 0.99 |
| Power connection | Standart 40cm cable, IP66 socket (optional) |
| Dim | 0-10V or PWM (optional) |

DIMENSIONS



SPECTRUM



*Legal disclaimer – Fiberli LED grow lights for cannabis production are only sold to geographical territories where the growth of cannabis is legalized by local laws.