



A better way to see!

COMPANY PROFILE



A better way to see!



Index

Greeting	6
Corporate Identity & Brand	8
Production	16
R&D	18
Design & Project Planning	20
Technology	22
Customer Experience	24
Facade Lighting	26
Interior Lighting	28
Exterior Lighting	30
Industrial Lighting	32
Social Responsibility	34
Showcase	36
References	40



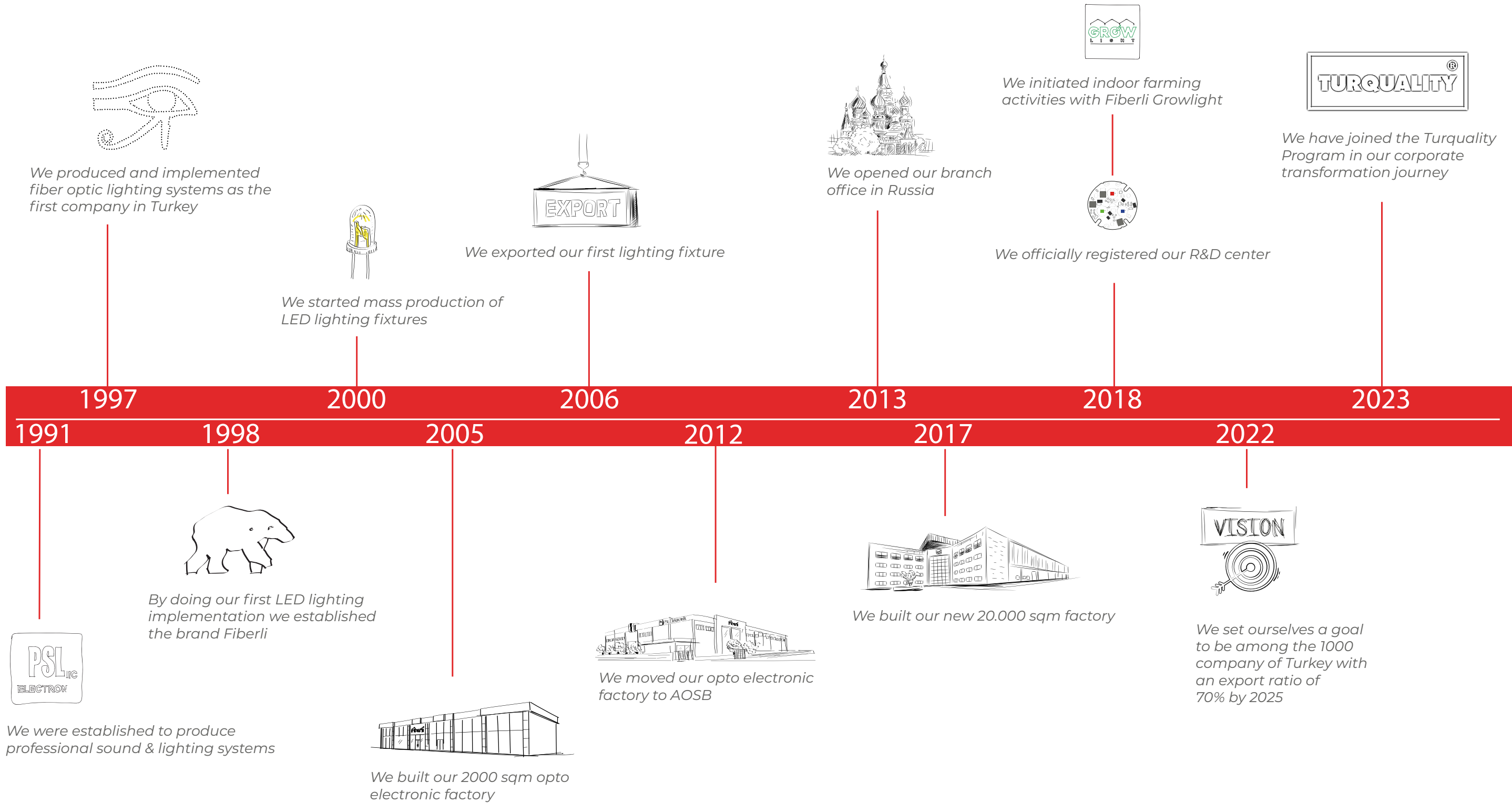
GREETINGS!

Fiberli has been illuminating the world with its passion for light since day one. In 1991, it started implementing fiber optic lighting systems with a professional team, thereby securing its place among the limited producers worldwide. By the year 2000, Fiberli began mass-producing LED lighting fixtures on the production line, and these fixtures started to be used in renowned architectural structures in Turkey and the surrounding region.

By producing dozens of products in different categories at its 23,000m² technological manufacturing facilities, Fiberli stands as a leading lighting company in facade lighting, indoor, outdoor, and industrial lighting domains. With its technology-producing R&D center, dedicated team, and the experience gained in thousands of different projects worldwide, Fiberli reimagines light, as starting point of our lives

Fiberli values collaboration with international architects and designers, not limited to the production of lighting fixtures alone. Its lighting design and product-oriented philosophy have been affirmed by international architectural and lighting awards such as the A' Design Awards. Additionally, the Antalya Düden Waterfall project, which derives its energy from the sun, was recognized among the world's top 3 lighting designs in the A' Design Awards of 2018.

Fiberli places importance on contributing to the environment and human life through R&D and quality. To achieve this, Fiberli conducts research and technical developments to obtain high efficiency with the least possible energy. This way, it produces more efficient lighting elements while preserving resources. With technological investments, Fiberli supports access to clean food by working on efficient agricultural production under the Growlight brand, providing LED lighting support for greenhouse and vertical urban farming.





WHY POLAR BEAR?

Polar bears live in endless icy landscapes, and we often think their thick white fur helps protect them from the cold. Contrary to appearances, their skin is actually closer to black in color. Each white hair in their fur exhibits fiber-optic properties, channeling the sunlight they receive directly to their black-pigmented skin, converting it into heat. Thanks to this remarkable mechanism, they make the most efficient use of the sun's energy. This is where Fiberli emerged from. Our logo, symbolized by the polar bear, represents the inspiration we draw from nature, our commitment to energy efficiency, and the perfect harmony of technology.

OUR PHILOSOPHY



Tema Park

Value Engineering

We add value to life with our light, expressing ourselves in the best way possible! Efficiency is at the core philosophy of our mission. Nature, which is also the origin of Fiberli, is the main element of our philosophy. We work for the highest efficiency, aiming to create the most elegant designs that are also in harmony with nature and beneficial for humanity.

Collaboration

What sets us apart is not only our technological infrastructure and R&D power but also the trust that we have with our partners and stakeholders. We serve to advance lighting by collaborating with lighting designers, architects, project experts, and all other stakeholders.

Sustainability and Quality

We place importance on quality and sustainability throughout the entire journey of lighting, from design to planning, from urban life to the individual. We focus on preserving our limited resources while adding value to human life. This way, we always ensure the quality in the products we produce and the projects we undertake.

Environment

We are excited about a bright, colorful, and clean world. Every furtherance we make in lighting technologies brings us one step closer to using light correctly. We take pride in contributing to the environment and humanity with safer streets and well-lit roads.

Technology and Humanity

Our engineers work every day to improve the use of light correctly. In the near future, we are developing technologies for smart lighting ecosystems that will be present in the smart cities we will inhabit. While developing these technologies, we work with a sensitivity towards both individuals and society.



Export to **70** countries

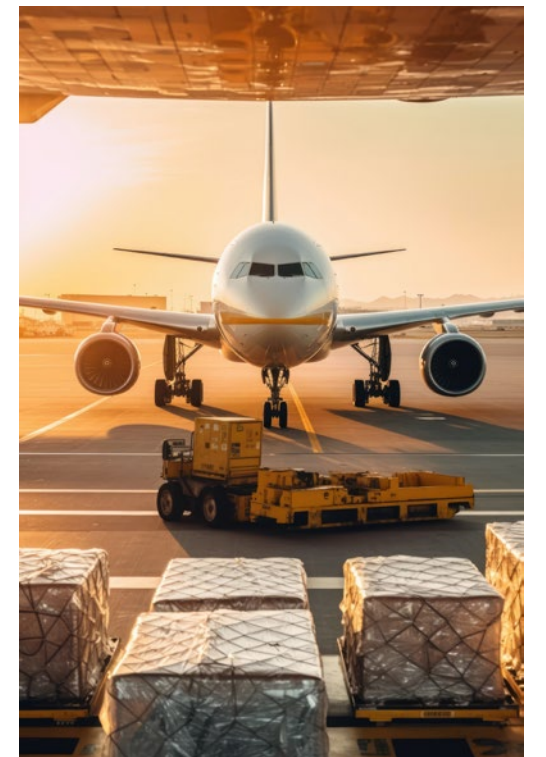


Fiberli is one of the two among the 377 companies active in this industry that accepted into TURQUALITY



Fiberli is a member of The Lighting Industry Resource Council (LIRC)

Since our first export in the year 2000, many things have changed in the lighting industry. Through our offices located in Europe, the UAE, and Russia, we provide logistics, technical support, and on-site solutions for our international operations. We continuously enhance all our global operations with the experience gained from lighting projects conducted in 70 countries worldwide. We prioritize customer satisfaction by adhering to international product and process standards that we have embraced



PRODUCTION

The best application of the technology we have developed is done by us. In this way, we produce the best products for you in our mechanical and electronic production facilities covering an area of 23,000 square meters. Our strong suit lies in our flexible production capability, allowing us to conduct both boutique and mass production with a focus on excellence.



Our manufacturing strength ensures that our customers experience a seamless and smooth process from design to logistics. To advance our high technology in manufacturing further, we stay updated on new developments and make investments in this direction.



As Fiberli, knowledge is our most valuable asset. We utilize our expertise to develop products and technologies while solidifying our knowledge through commercial successes.

R&D Better from good

Fiberli invites you to a world where innovation meets passion! We place the boundless energy of our young and expert engineers at the heart of all our activities. With a strong emphasis on research and development, we allocate a significant share above the industry average, pushing the boundaries of technology.

We believe wholeheartedly in our ability to create a brighter and more promising future for everyone. In this exciting journey filled with passion and innovation, we are redefining the meaning of excellence.

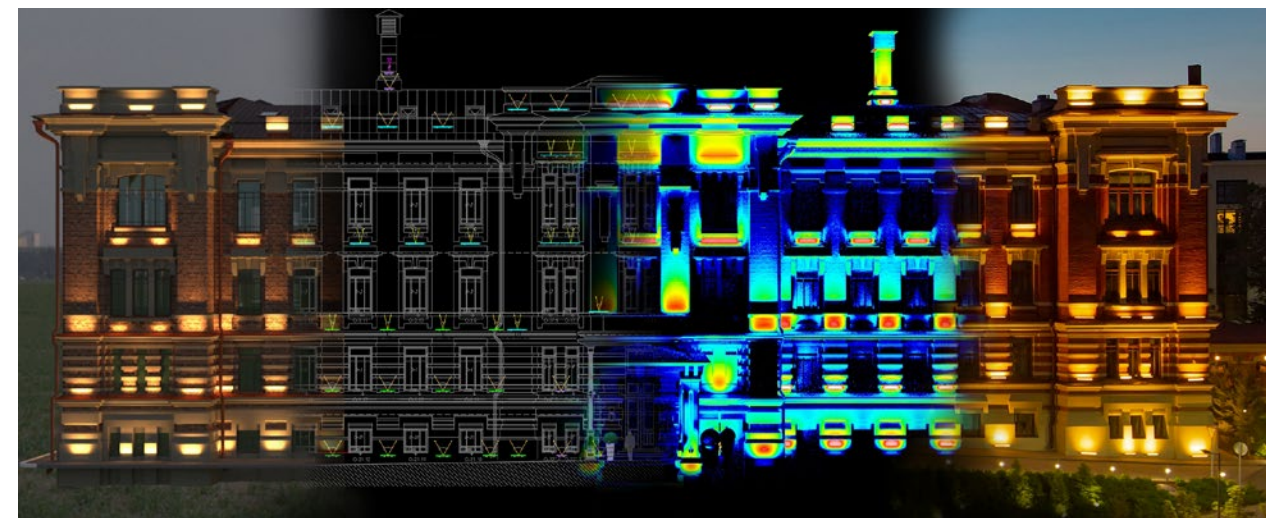


DESIGN

PROJECT PLANNING

By combining elegance, simplicity, and functionality in our designs, we draw inspiration from our experience and the future. Beyond a doubt, the significance of technology and innovation comes to life when combined with unique design. Fiberli's lighting elements add elegance and sophistication to spaces in the same time infusing meaning into people's daily lives. We blend the essence and spirit of each piece produced at Fiberli with traditional aesthetics without losing their essence. As a result, spaces shine like works of art, whether it's day or night.

Fiberli operates with a customer-centric approach, establishing effective communication to understand their needs and expectations. We collaborate closely with our customers throughout all stages of the project, providing the best solutions to bring their unique visions to life. Thanks to our project planning capabilities, thousands of different lighting projects come to life, each with its own unique stories.

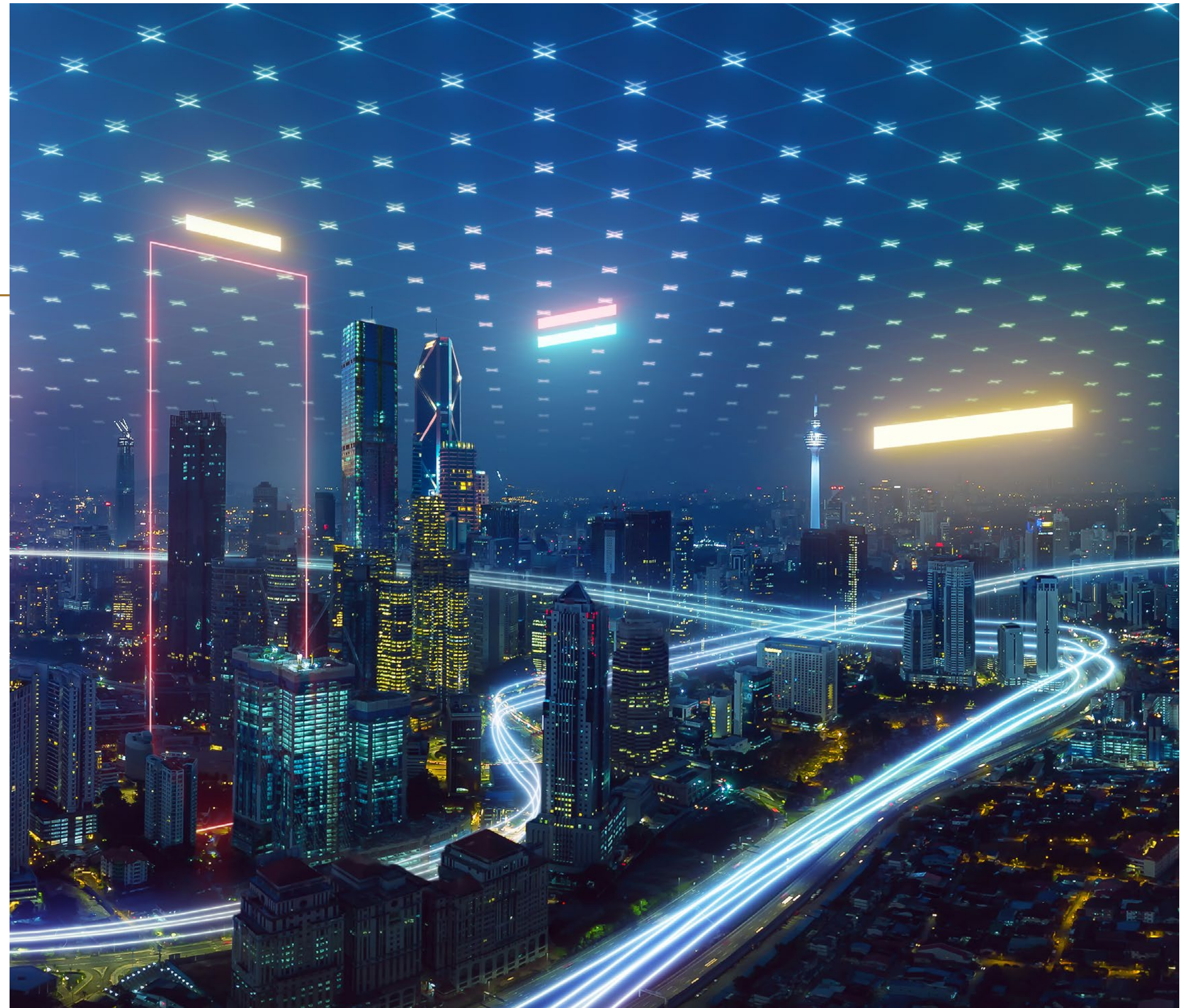


Location

TECHNOLOGY

Lighting is undergoing a contemporary transformation by becoming one of the fundamental components of smart cities integrated with technology. Smart cities represent a movement that sees luminaires not just as a means of providing light but as an initiative to enhance energy efficiency and the quality of urban life. With our investments in technology and our future vision, we are ready to take the lead in the establishment of smart cities.

Bringing technology and humanity together with the power of light, we will construct bright, peaceful, and smart cities.



CUSTOMER EXPERIENCE

Those who have the privilege of working with Fiberli not only receive high-quality lighting products but also benefit from flawless customer experiences and rapid solutions. Following production, we provide assembly services with our competent team according to your needs. We offer end-to-end solutions for the flawless implementation of your lighting project.

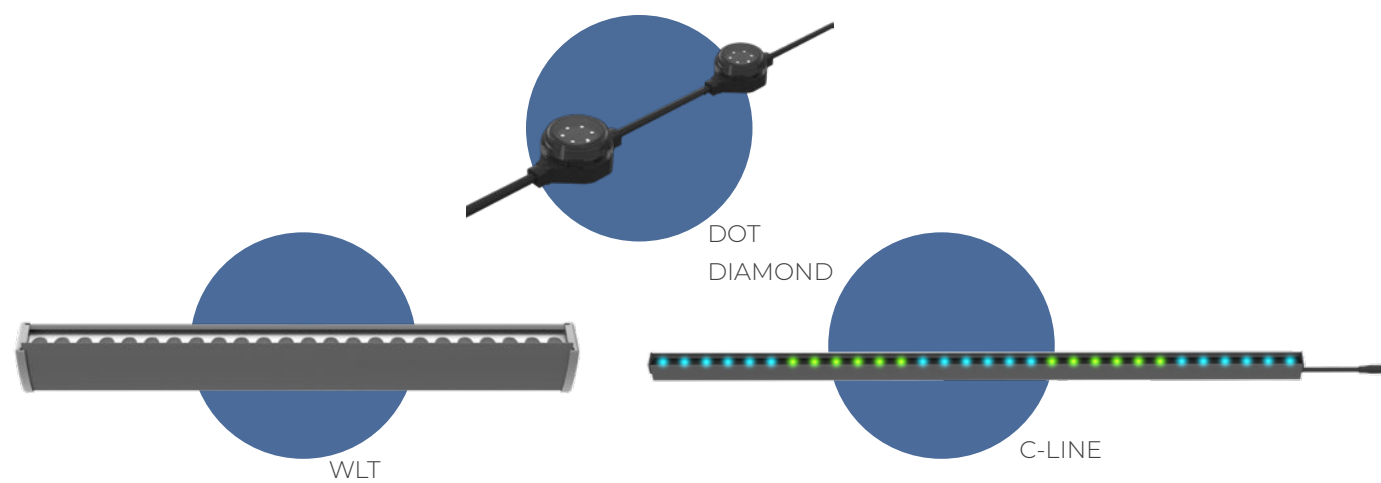
With our after-sales services and extended warranty policies, you can quickly receive support and effortlessly find solutions in case of any issues.





ikon Tower - Izmir

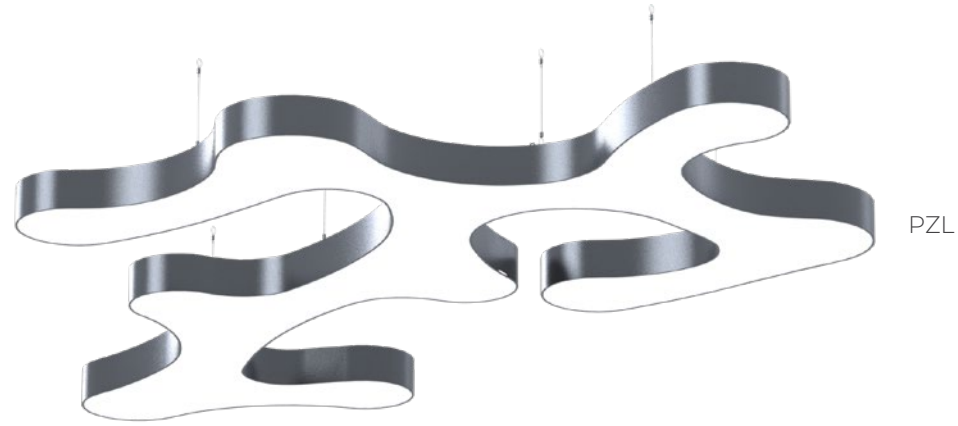
FACADE LIGHTING



With Fiberli's professional facade products and skillful use of colors, we bring out the lines and details of buildings. Facade lighting turns landmarks, bridges, monuments, and other high-rise buildings into a visual spectacle while adding an impressive atmosphere to their surroundings. Highlighting of architectural structures through the use of lighting enhances the aesthetic value of urban identity.

Our facade lighting solutions, which combine aesthetics and functionality, impart a unique character to buildings. Thanks to highly efficient LED technology and our optical designs, they emphasize the striking silhouette of structures and spaces with low energy consumption.

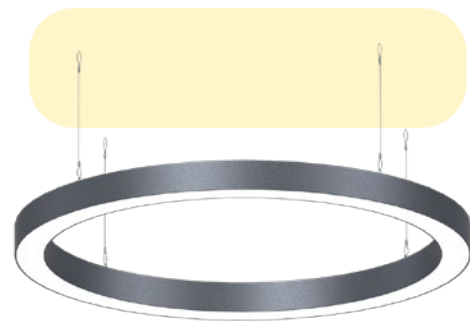
INTERIOR LIGHTING



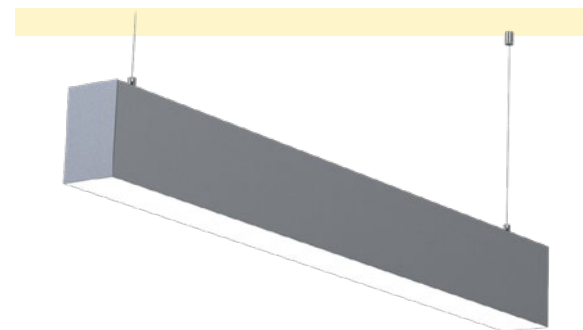
We add a unique touch to your living spaces with our indoor lighting products. Our professional team combines aesthetics and quality to offer modern and stylish designs. We enhance energy efficiency with innovative LED technology and elevate lighting comfort with superior optical structures and low glare designs. Our products, where every detail is carefully considered, create a warm atmosphere in your living spaces while offering functionality. With our wide range of products suitable for different styles and space characteristics, we meet the lighting needs of homes, workplaces, and all indoor spaces.



YONJA



BLZS



EPL

Salaris Mall - Russia





Beach Park - Antalya

EXTERIOR LIGHTING



AYDAN

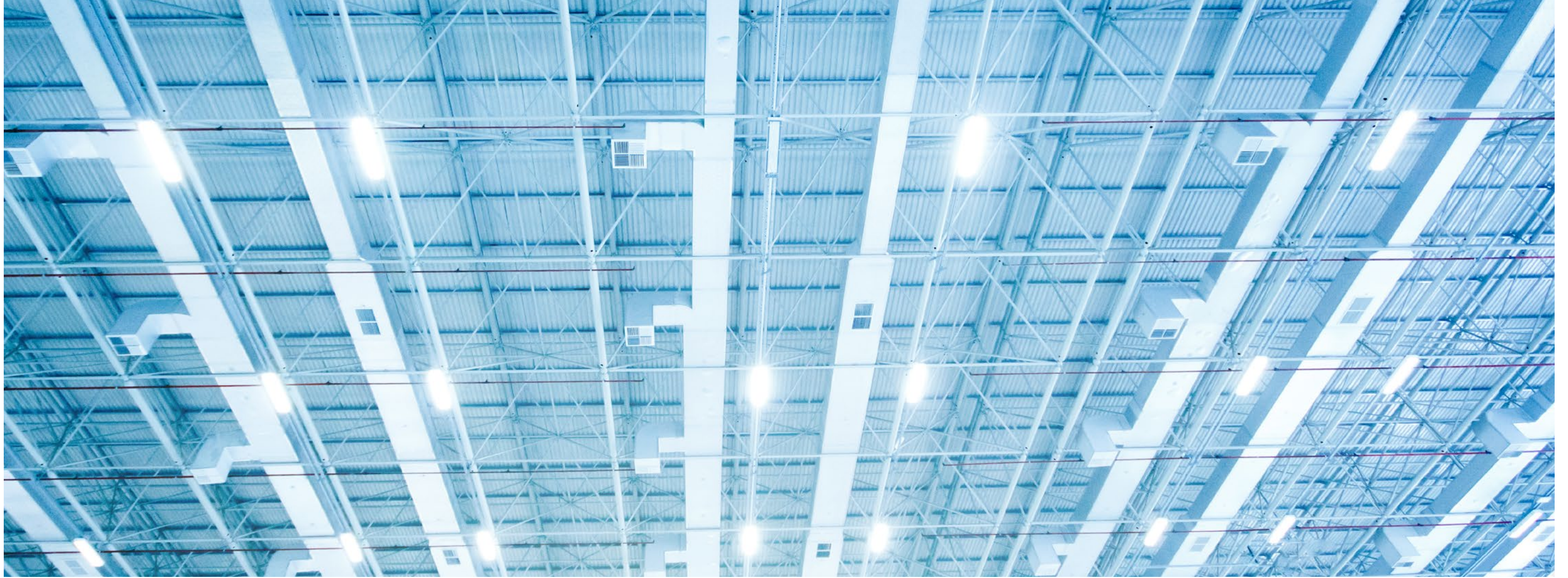
BOLLARD L

POLE V

ARC CIRCO

Fiberli improves living spaces by illuminating parks, gardens, and urban squares with its outdoor lighting solutions. We emphasize the atmosphere of urban landscapes with our aesthetic designs, while providing sustainable lighting in cities through energy-efficient and environmentally friendly technologies. By combining our high-efficiency road lighting products with right designs, we contribute to the establishment of comfortable and secure cities.

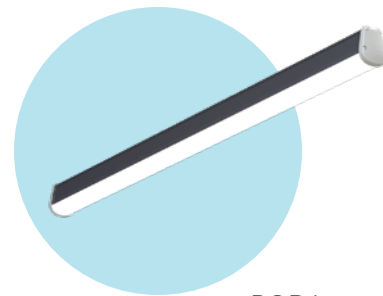
Our expertise in pool and ground fixtures highlights the complementary architectural elements of structures. We achieve energy savings while always prioritizing effective lighting and safety measures with our modern LED lighting solutions.



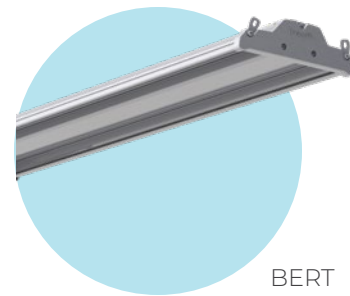
INDUSTRIAL LIGHTING



CRAKE



RODA



BERT

Fiberli is a pioneering and reliable lighting solution provider in industrial production areas. We create excellent solutions for our customers by offering energy savings and efficiency with our LED lighting products. We are aware of the significant impact of lighting in industrial facilities on occupational safety, productivity, and employee motivation. Thanks to modern LED technology, we provide lighting with high-quality and long-lasting products.

Our advanced lighting designs support occupational safety by providing homogeneous and effective light distribution. We offer field exploration and project planning services considering the specific needs of businesses, following international standards. Our professional team manages your industrial lighting projects from start to finish, providing the most suitable solution for your business needs.



Social Responsibility

We operate on the principle of working for the welfare and well-being of the community in addition to success and growth. Sports are an important part of health and social cohesion. Therefore, we take pride in providing corporate support to organizations operating in the field of sports.

We contribute to the development of young talents in many sports disciplines, ranging from football to basketball, swimming to athletics. Additionally, we sponsor sports events and tournaments, contributing to the spreading of sports and its reach to wider audiences.



We take significant steps not only in the field of sports but also in social responsibility projects. We showcase the transformative power of social benefit on society by hosting many non-profit organizations. We stand alongside disadvantaged groups, supporting projects that make a difference in education and healthcare.

In addition to our social responsibility projects, we also take a pioneering role in environmental sustainability and energy efficiency. We promote energy savings and offer environmentally friendly products by using the latest technologies in our lighting products. This way, as an environmentally conscious company, we contribute to the preservation of natural resources.

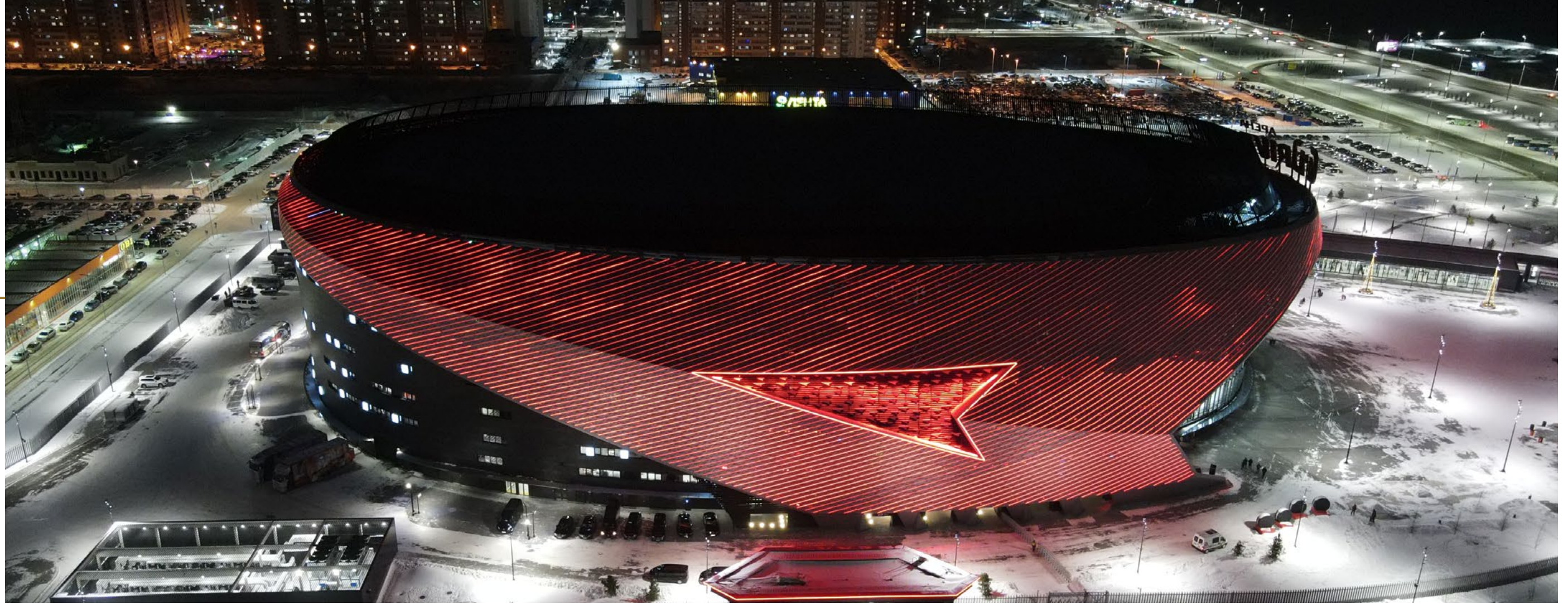
SHOWCASE



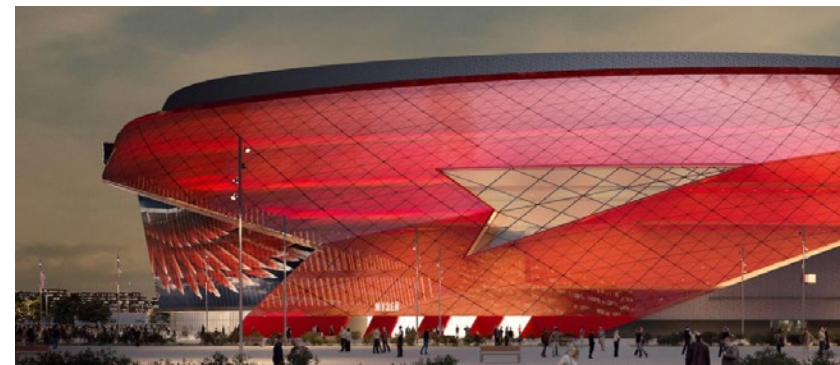
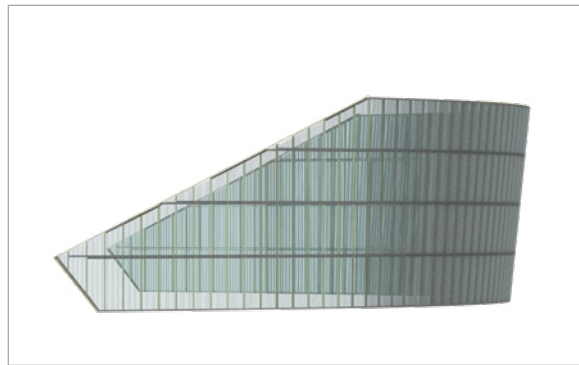
G-Drive Arena, with a capacity of 12,000 spectators and spanning over 64,000 square meters, stands out as one of the prominent sports facilities in the world, both in terms of its architecture and technical concept. The arena incorporates cutting-edge lighting design and applications that encompass international best practices, both architecturally and technically.

Furthermore, it holds the distinction of being the home stadium for Avangard OMSK, one of the popular teams in the Kontinental Hockey League (KHL), Europe's largest ice hockey league. This mega arena, one of the world's largest venues, elevates the sports experience to the next level with its high-tech screen

SHOWCASE



Arena OMSK - Russia



What makes the media screen unique is its transparency when it is not in operation, allowing visibility from inside the arena to the outside and vice versa. The facade screen, which is harmoniously designed to complement the distinctive twisted surface of the architecture, is one of several elements that make the arena's architecture special. The 123-meter-wide screen uses Fiberli Ledline products, synchronized directly with the lighting on the arena's facade, to create a visually stunning show rarely seen elsewhere. The total media screen spans an area of 1,640 square meters

Fiberli brought to life an exceptional lighting application at the G-Drive Arena that combines technical and architectural elements rarely seen elsewhere. Fiberli Wallwasher fixtures, concealed within the facade, accentuate the stadium's grandeur, while the linear Ledline lighting applied to the sharp lines on the exterior of the facade ensures design coherence. This project, which includes 27,000 meters of special LED applications, quickly became one of the city's symbols as a rare architectural lighting design that accomplish two different facade lighting techniques on a single surface

REFERENCES

Istanbul Financial Center

The Istanbul Financial Center project, one of Turkey's strategic initiatives, is built on an area of two million five hundred thousand square meters that includes office towers, convention centers, shopping malls, and residential spaces. The structure is a mega project constructed with a blend of traditional and modern architecture.

Fiberli's signature can be found on nearly all of the Gold LEED certified and smart city concept GYO (Real Estate Investment Trust) buildings within the project. The impressive designs of leading lighting design offices in Europe and Turkey come to life with well-designed Fiberli facade fixtures. We take pride in contributing to the skyline of this ancient city by hosting important banks and financial institutions from both domestic and international.





Cihangir Mosque - Istanbul

Illuminating the Heritage

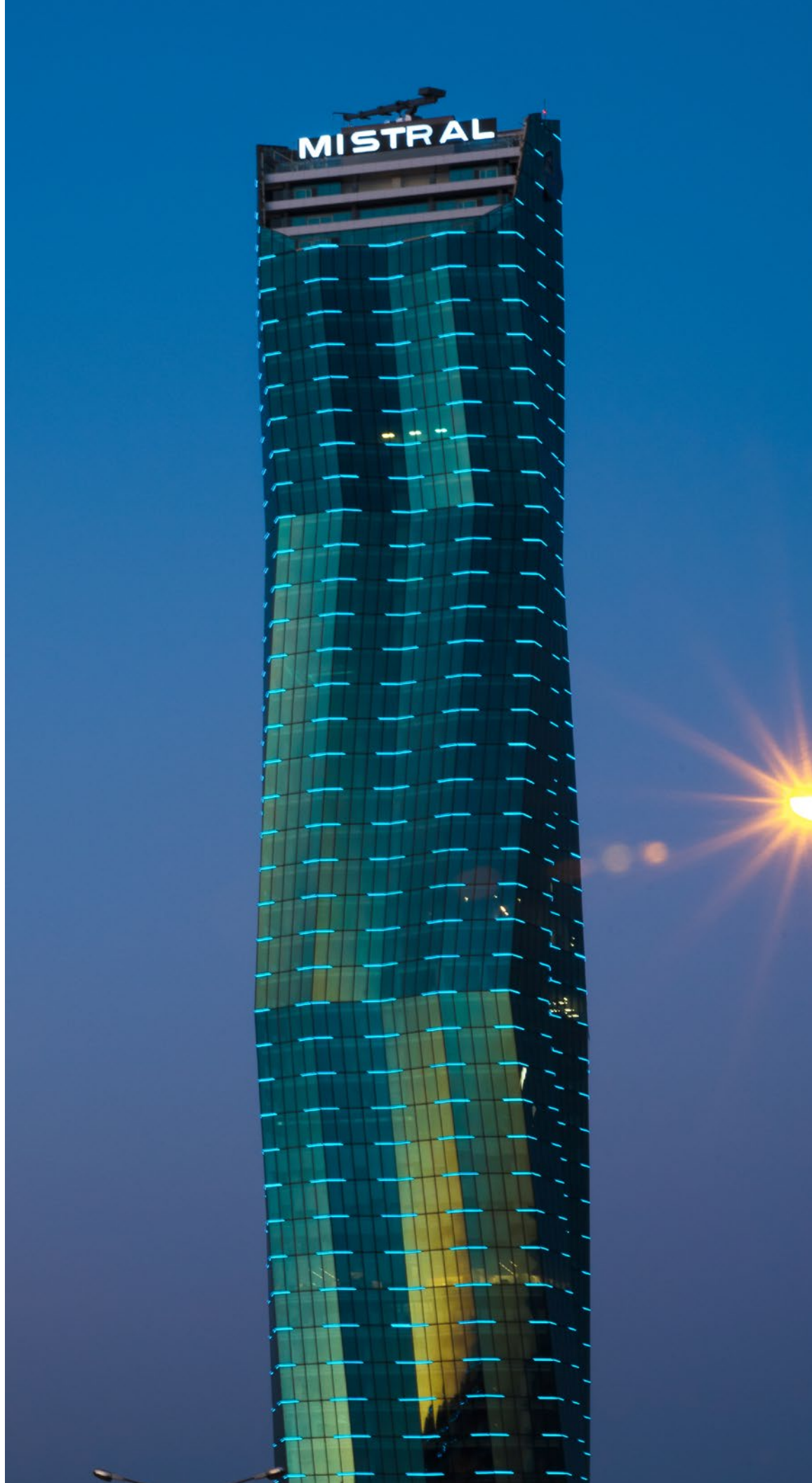
Lighting also has a significant aesthetic impact. Creative lighting designs can transform architectural textures into enchanting atmospheres, offering a visual display. This function not only enhances urban life but also highlights the emotional aspect of architecture in historical buildings.



Patara Ancient City - Antalya



Aspendos Theater - Antalya



Mistral Towers - Izmir



Maslak No1 - Istanbul

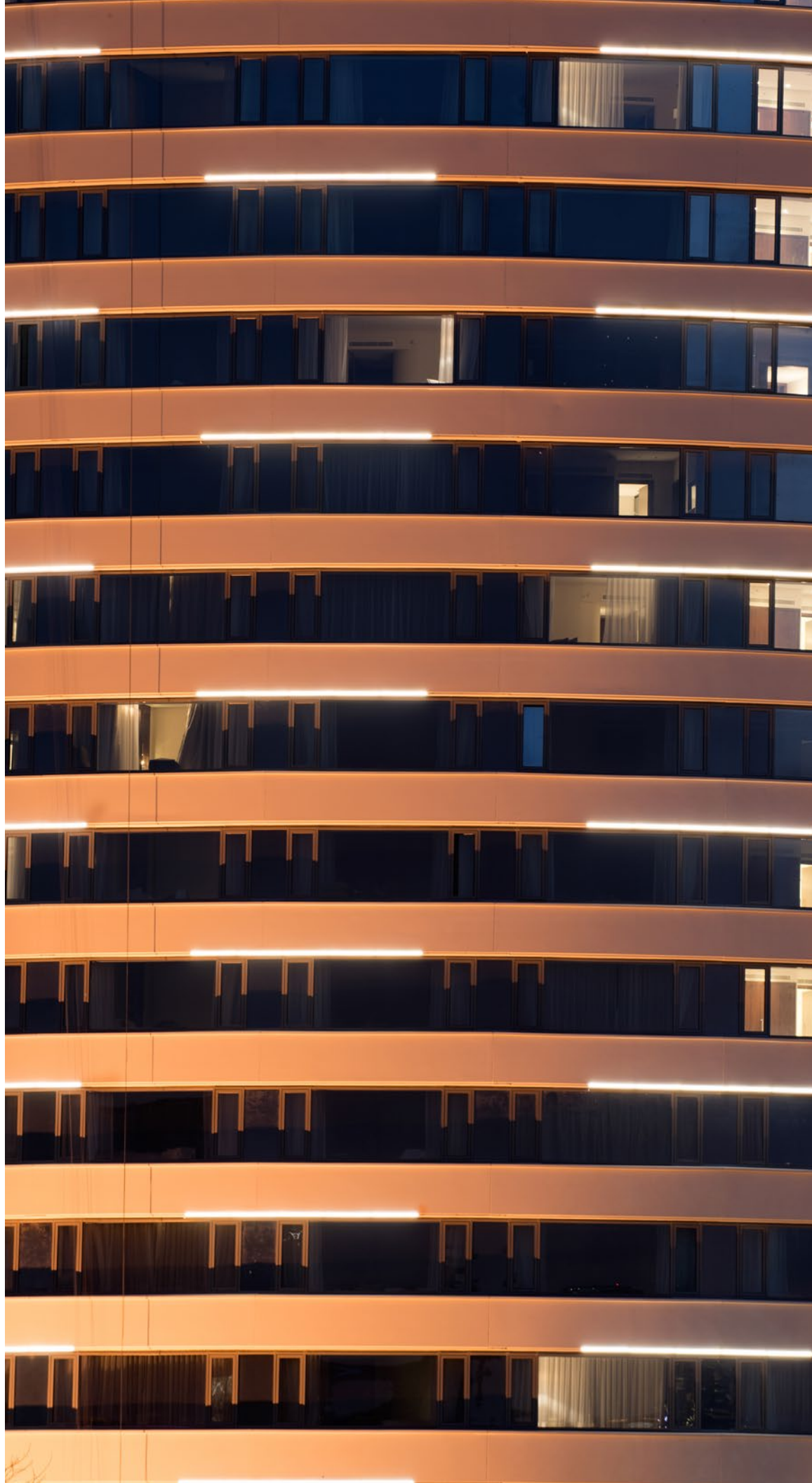
Mercure Hotel - Amsterdam



Ayada - Maldivler



Mardan Palace Hotel - Antalya



Conrad Hotel - Istanbul



Kemer Atatürk Park - Antalya

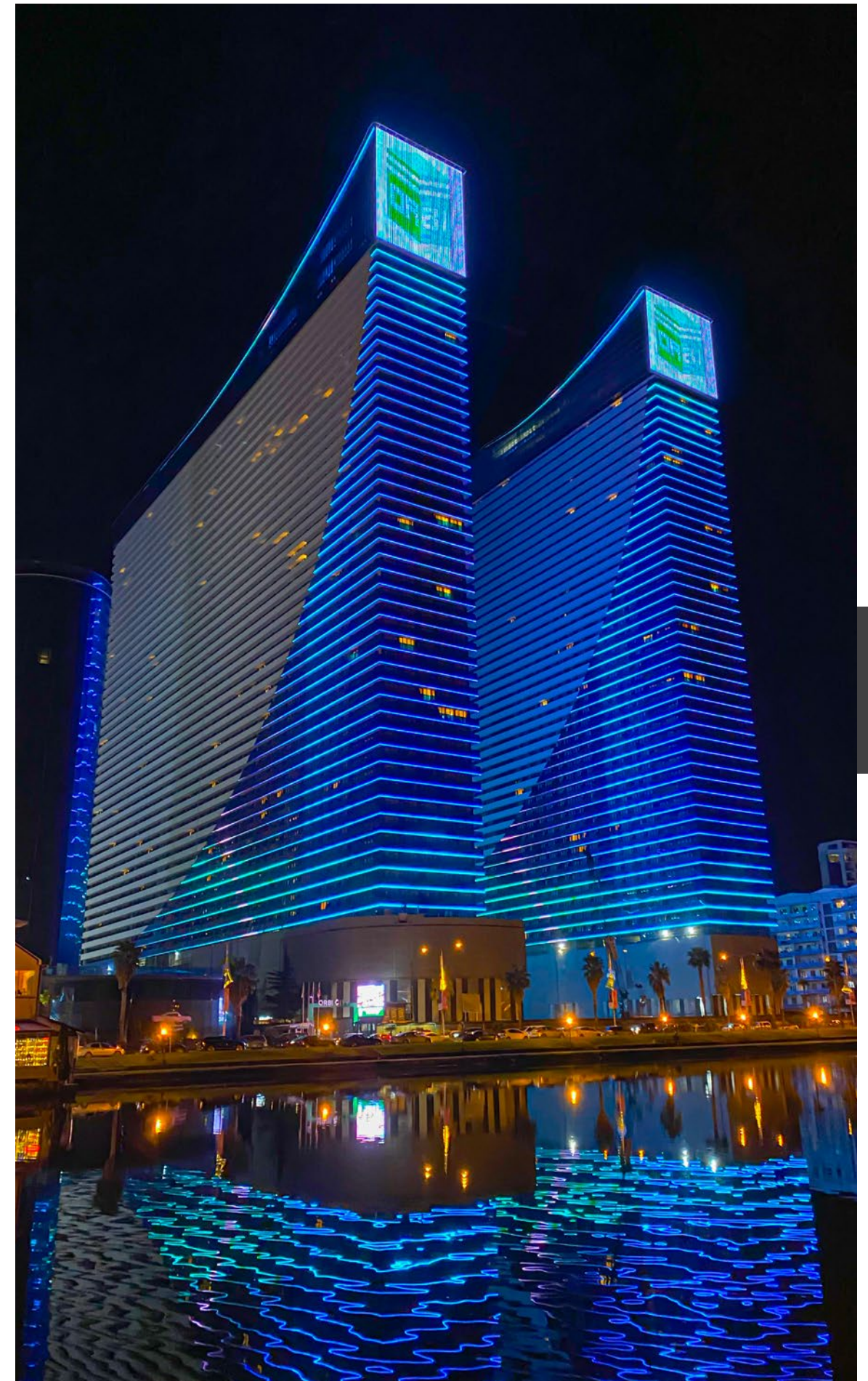
Urban Life

Lighting is indeed a crucial element of modern urban life. Properly implemented lighting in parks and gardens contributes significantly to urban life and architectural aesthetics. It plays a significant role in terms of preventing dark and potentially hazardous areas, allowing public spaces to be safely used at night.

City lighting not only contributes to urban architecture but also encourages social interaction. Illuminated areas in parks and gardens enhance people's desire to meet and interact, strengthening social bonds.



Albania Arena



Orbi Twin Towers - Georgia



Hagia Sophia, with its breathtaking domes that seem to float in the air, solid marble columns, and unique mosaics, is one of the wonders of world architectural history. Hagia Sophia is located on the original hill of Istanbul, surrounded by the Marmara Sea, the Bosphorus, and the Golden Horn on three sides.

Fiberli's signature can be found in the simple yet striking lighting of this unique witness of history.



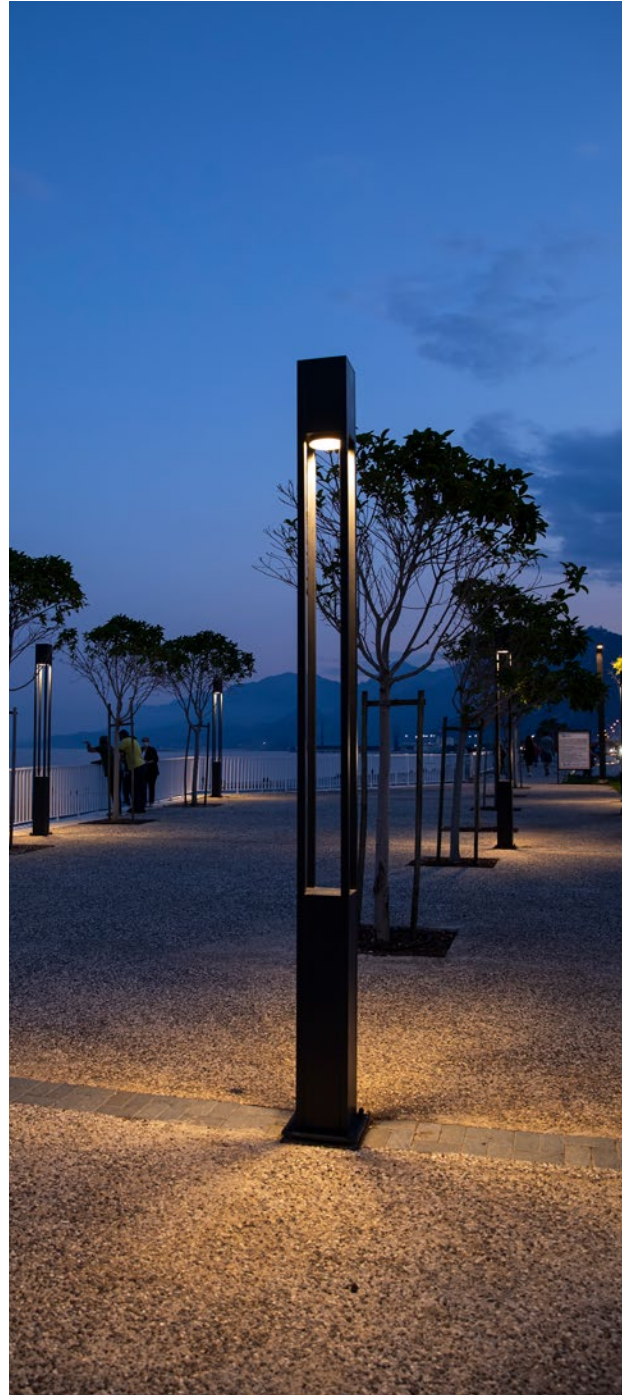
Galataport Paket Postanesi- Istanbul



Zakintos Hotel - Greece



National Museum of Egyptian Civilization



Konyaalti - Antalya

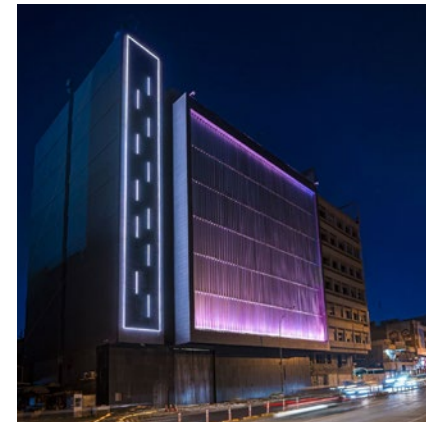


Kibele Residences - Istanbul

Kigali Convention Center - Rwanda



Maxx Royal Belek Golf Resort - Antalya



Bank of Baghdad - Iraq



Osm Urla - Izmir



Talan Tower - Kazakhstan



Tramway Signaling System - izmir

İzmir Train Garı



DAP Spiral Tower - Istanbul





A. Türkeş Köprüsü Kavşağı - Manisa



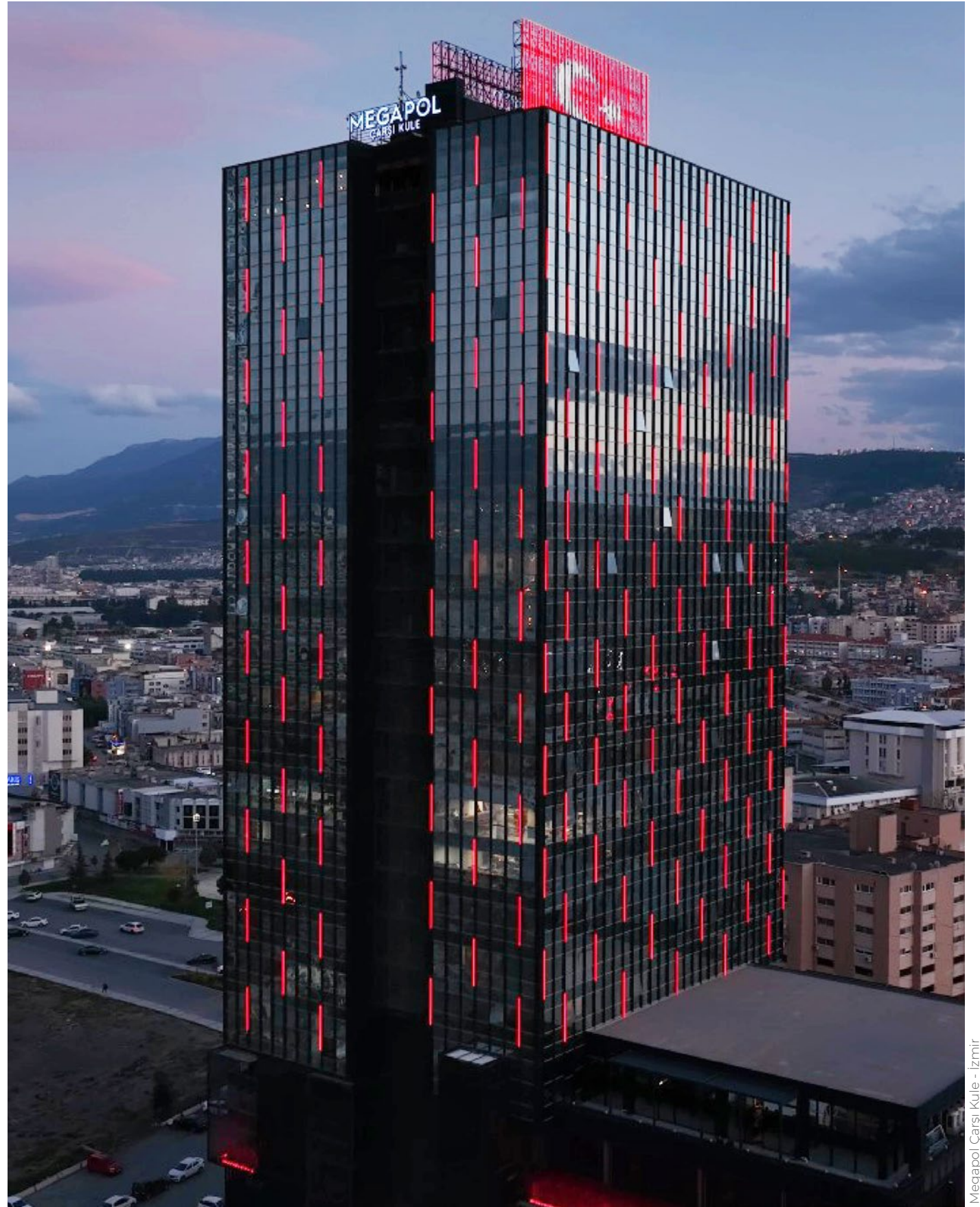
Dostluk ve Gençlik Bridge - Adana



Sinpaş Queen - Istanbul



5. Levent - Istanbul



Megapol Çarşı Kule - Izmir

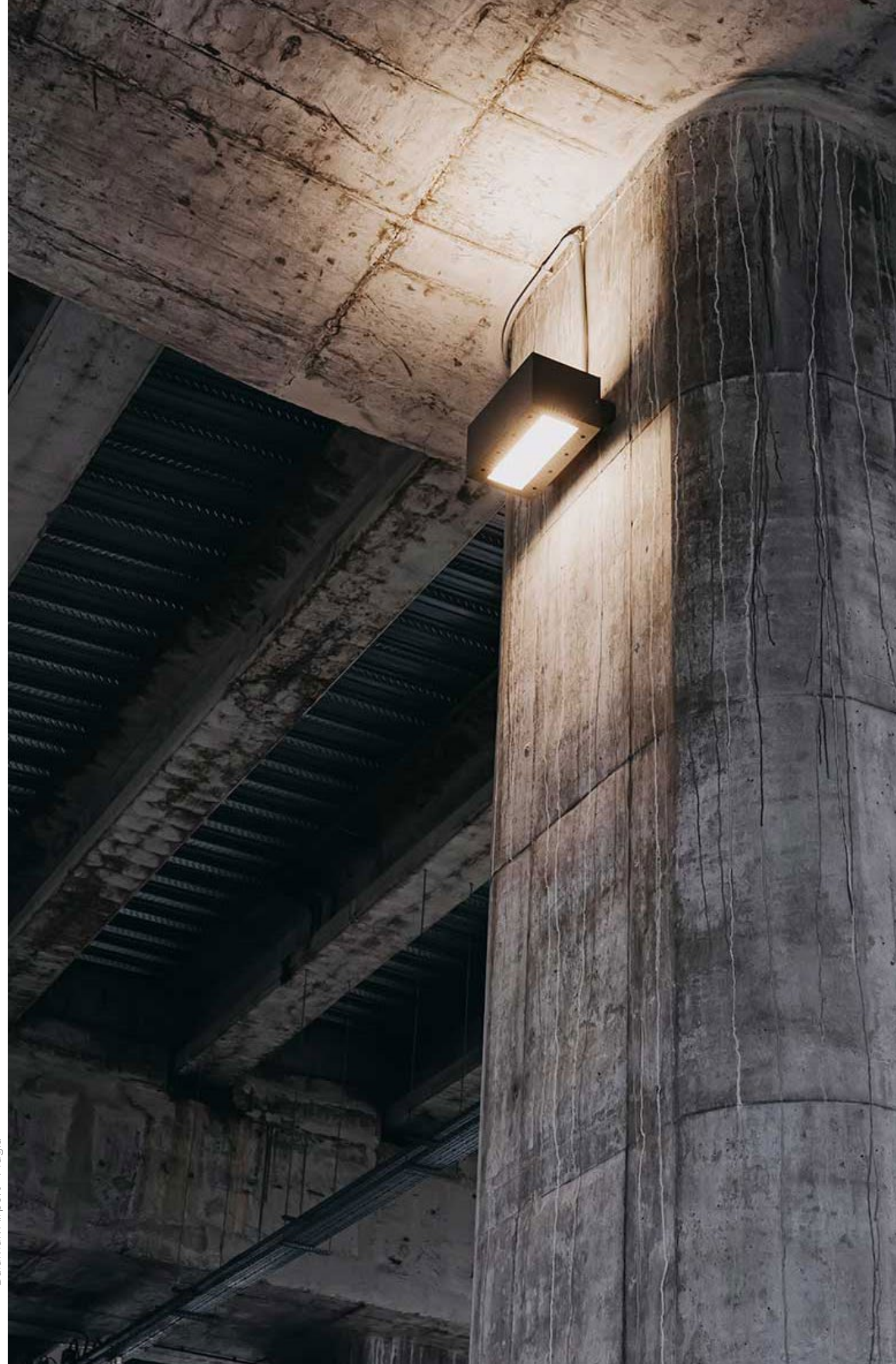


Riviera AVM - Russia

İstanbul Büyükşehir Belediyesi Yol

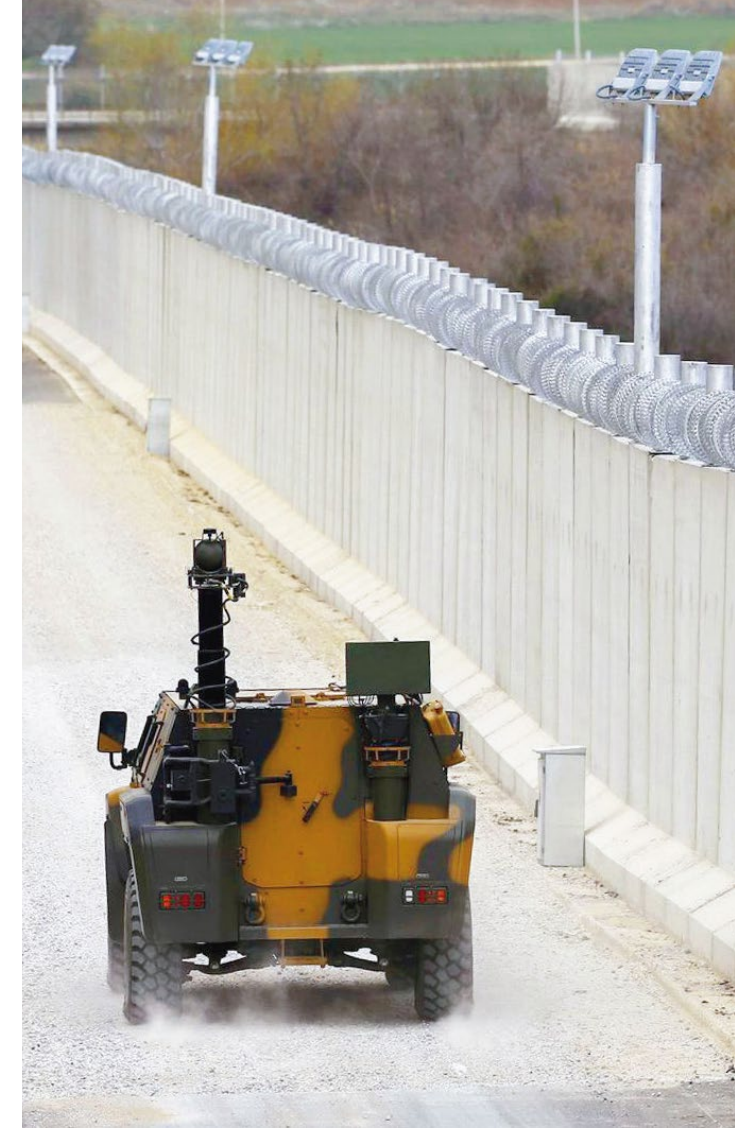


Dalaman Airport - Muğla





Turkish Armed Forces Border Outposts



Defence Industry Collaboration

In the defense industry, lighting plays a critical role in ensuring the successful execution of military personnel's duties, as well as enhancing security and operational efficiency. Proper lighting is an indispensable requirement for the successful conduct of military operations and ensuring the safety of personnel.

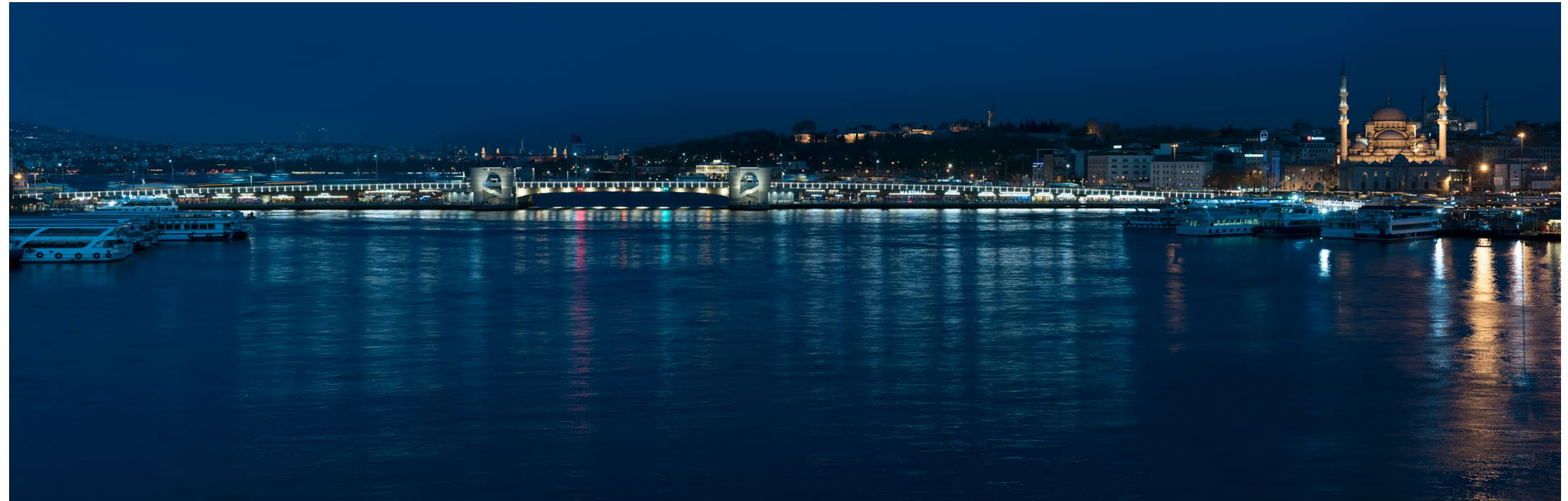
The products we have developed in collaboration with the Turkish Armed Forces and TÜBİTAK (The Scientific and Technological Research Council of Turkey) are actively used in operational areas. Our high-efficiency lighting products, equipped with advanced technology, provide the Turkish Armed Forces with support in terms of effective operational ease, efficient energy use, mission execution, and security.

One of these fixtures is the "Kartal Gözü," which is custom-designed for border outposts of the Turkish Armed Forces. It can be connected to a network and has a remote control mechanism, allowing for infinite rotation, moving 40 degrees down and 75 degrees up. It features 1/2.8" 2.13MP Sony Progressive Scan CMOS image sensors, enabling 32x optical zoom, and it can perform effective scanning and imaging activities with 40,000 lux illumination power.





Aspendos Ancient Theater - Antalya



Galata Bridge - Istanbul



Düden Waterfall - Antalya

A' Design Award and Competition is one of the World's largest, most prestigious, and influential design awards. Winning an A' Design Award is considered a significant achievement in the field of design, symbolizing exceptional design excellence in your products, projects, or services. It serves as a recognition of outstanding creativity and innovation in various design categories.

These awards serve as a testament to Fiberli's creativity and quality in design and lighting projects, with inspiration get from nature and childhood memories.



The ARC and KITE luminaires, inspired by nature and childhood memories of Fiberli designers, received awards in the product category, while the Düden Waterfall lighting project received an award in the lighting project category..

The ARC luminaires are products inspired by nature, taking cues from the delicate yet durable sprout leaves of plants. Designed with both aesthetics and durability in mind. The KITE luminaires draw inspiration from children's kites and are designed to bring a cheerful and aesthetic function to streets and avenues. These luminaires are ideal for adding a colorful and lively atmosphere to lighting projects.

The award-winning Düden Waterfall lighting project utilizes solar energy and features a design that transforms it into a glittering display. Its design is reminiscent of an elegant bridal gown with special applications to create a sparkling effect.

www.fiberli.com



Fiberli

A better way to see!

PSL ELEKTRONİK SAN. ve TİC. A.Ş.

Organize Sanayi Bölgesi 3. Etap 25. Cad. No: 30

Döşemealtı / ANTALYA

Tel: +90(242) 228 81 50

info@fiberli.com