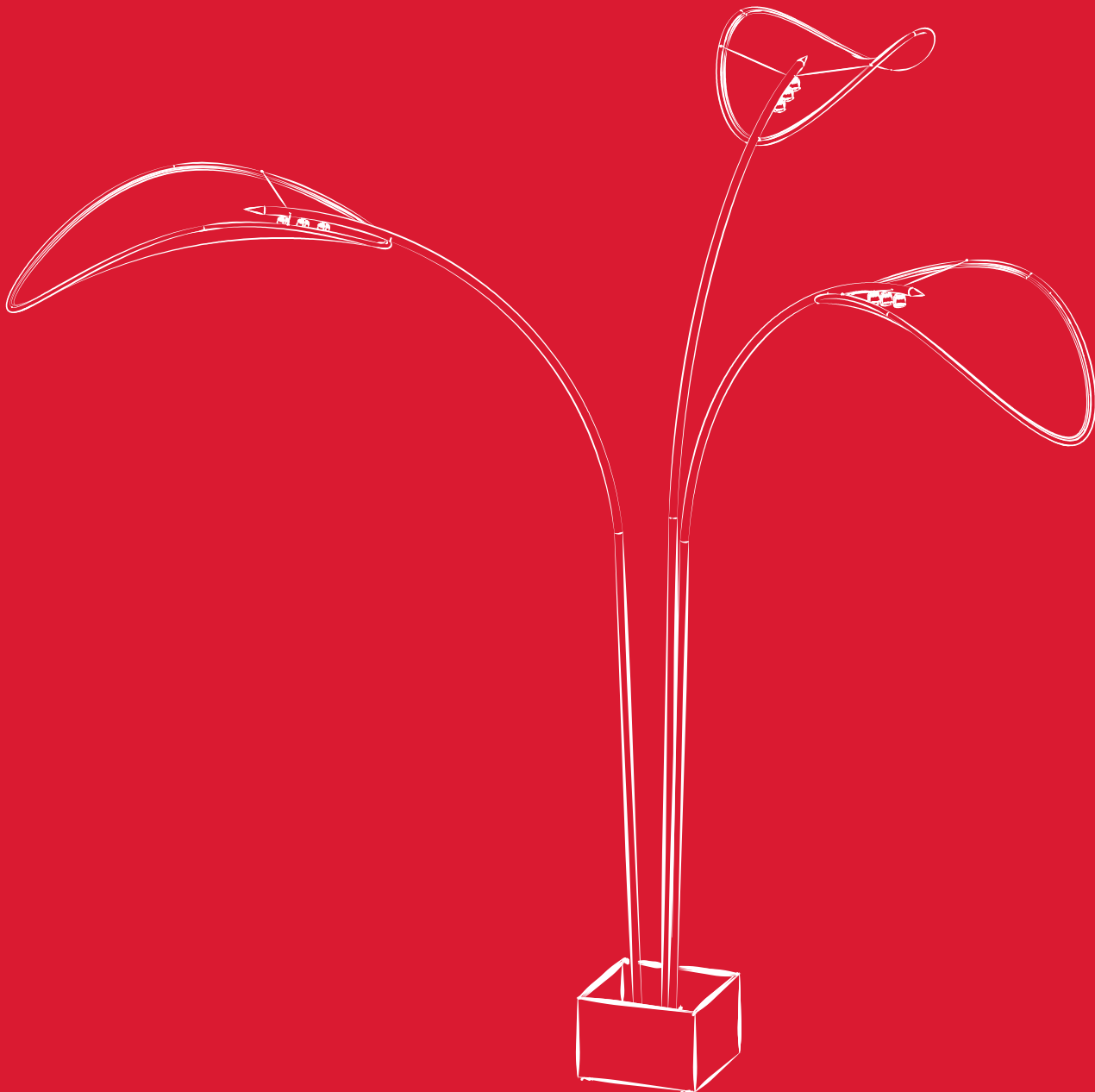




## CONCEPT LIGHTING PRODUCTS CATALOG

---



# Contents

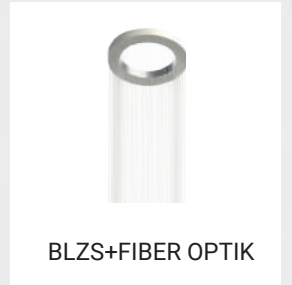
## Ledline



## CromaDown



## Decopendant



## LEDCell



## Aplik



## CromaStreet



# Contents

## CromaBollard



CB-TWIN



CBC100-IKAZ



BILLET 100



CBSGEN 150

## PL



SPFE

## Marin



ACK1



ACK3



AC3M

## Konsept Tasarım



WALL-U



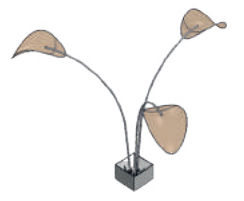
LEAF



LAMP O



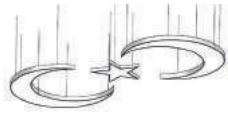
LAMP U



VASE



K-S-DEVE



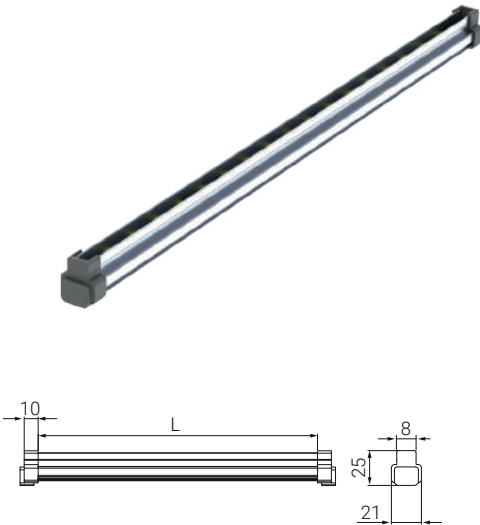
AY-YILDIZ



GALAXY



SHADE



- Glass/Plexi shelf lighting
- Anodized aluminum extrusion profile
- Stainless connection screws
- Suitable for indoor use
- Can be used with 8mm plexi/glass

## P W Product & Power Options

Product Name	Light Color	Input Voltage (V)	Power (W/mt)	Luminous (lm)	Weight (kg)
LLEL 60LED	WW-NW-CW	24V DC	18	980	0,3
LLEL 90LED	WW-NW-CW	24V DC	7,2	440	0,3
LLEL 180LED	WW-NW-CW	24V DC	14,4	815	0,3

\*Power and lumen values measured with cool white (CW).

## C Light Color Options

● WW: Warm White	3000K
● NW: Natural White	4000K
● CW: Cold White	6500K

## O Lens Options



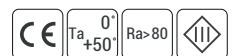
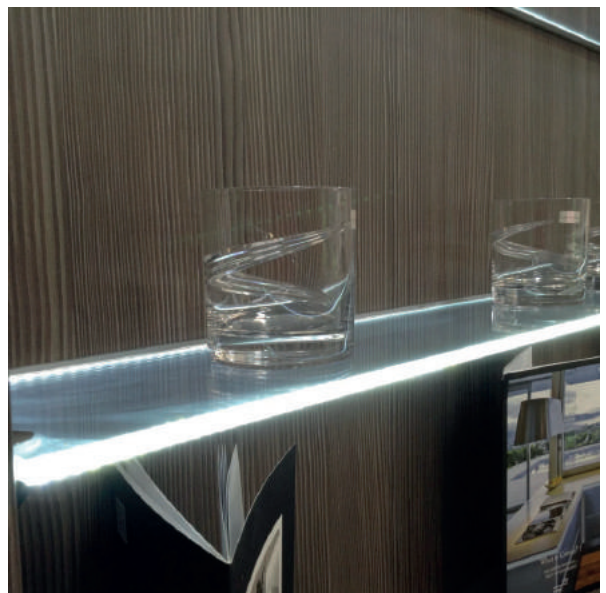
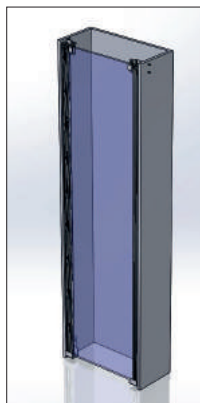
M: Medium Angle

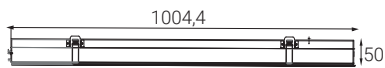
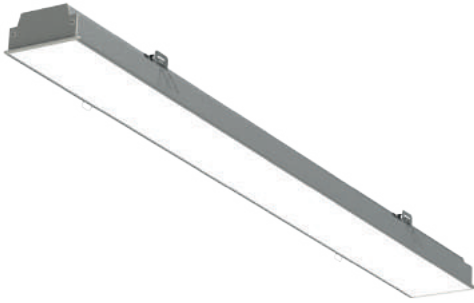
## G Housing Color Options



01: Elokssali RAL9005 RAL9007 RAL9016

## Mounting Method





- Anodized aluminum extrusion profile
- Stainless connection screws
- UV protected ABS side cover
- Suitable for indoor use
- Suitable for surface mounting

## P W Product & Power Options

Product Name	Light Color	Input Voltage (V)	Power (W/mt)	Luminous (lm)	Weight (kg)
ERL100 - H50	WW-NW-CW	24V DC	36	2100	1,9
ERL100 - H50	WW-NW-CW	24V DC	45	2880	1,9
ERL100 - H50	WW-NW-CW	24V DC	54	3240	1,9

*\*Power and lumen values measured with cool white (CW).*

## C Light Color Options

● WW: Warm White	3000K
● NW: Natural White	4000K
● CW: Cold White	6500K

## O Lens Options



W: Wide Angle

## G Housing Color Options

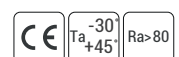


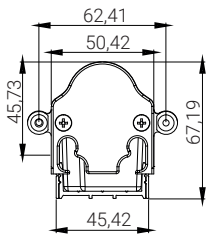
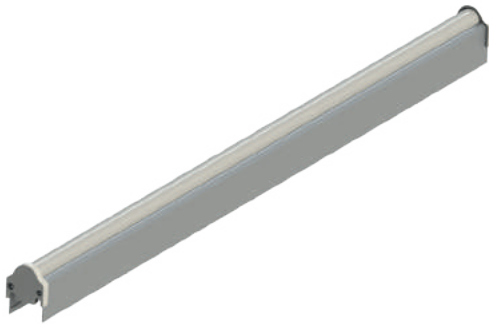
RAL9016

RAL9007

RAL9005

01:ELOKSAL





- Anodized aluminum extrusion profile
- High-efficiency UV protected diffused top cover
- UV protected PVC side cover
- Internal driver option
- Stainless fittings
- Suitable for indoor and outdoor surface mounting

## P W Product & Power Options

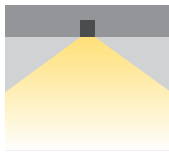
Product Name	Light Color	Input Voltage (V)	Power (W/mt)	Luminous (lm)	Weight (kg)
LLW3 60LED	WW-NW-CW	24V DC	14,4	730	1,5
LLW3 90LED	WW-NW-CW	24V DC	21,6	975	1,5
LLW3 180LED	WW-NW-CW	24V DC	14,4	625	1,5

\*Power and lumen values measured with cool white (CW).

## C Light Color Options

● WW: Warm White	3000K
● NW: Natural White	4000K
● CW: Cold White	6500K

## O Lens Options

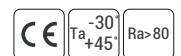


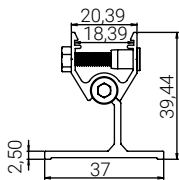
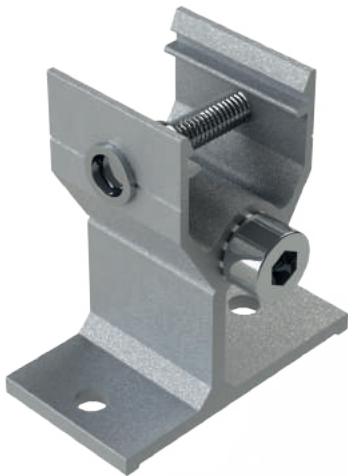
XW: Without lens

## G Housing Color Options



RAL9016 RAL9007 RAL9005 01:ELOKSAL



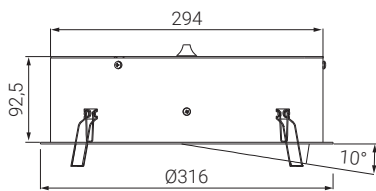


- Orientable, LED profile mounting foot
- Anodized aluminum extrusion profile
- Stainless fittings
- Suitable for indoor and outdoor use

## Compatible Product List

LLS	LLK	LLKP	LLKS	LLU
				





- Rotatable, recessed luminaire
- Electrostatic powder-coated DKP body
- PC luminaire glass
- Aluminum cooler
- Suitable for recessed use
- 0-10° directional body

## P W Product & Power Options

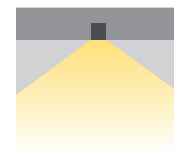
Product Name	Light Color	Input Voltage (V)	Power (W/mt)	Luminous (lm)	Weight (kg)
CDP316	WW-NW-CW	220-240V AC	20	2.000	1,8

\*Power and lumen values measured with cool white (CW).

## C Light Color Options

● WW: Warm White	3000K
● NW: Natural White	4000K
● CW: Cold White	6500K

## O Lens Options

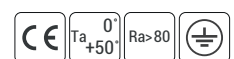
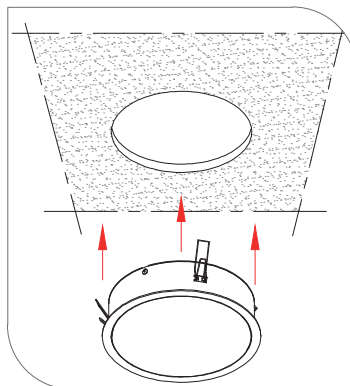


XW: Without lens

## G Housing Color Options

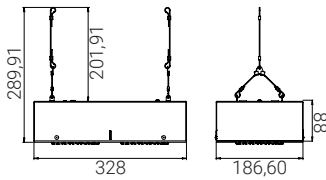


## Mounting Type





IP  
44



- Aluminum injection body
- Polycarbonate efficient group lens
- Stainless connection screws

## P W Product & Power Options

Product Name	Light Color	Input Voltage (V)	Power (W/mt)	Luminous (lm)	Weight (kg)
FRZ-QR111A	WW-NW-CW	220-240V AC	20	2120	4,5
FRZ-QR111A	WW-NW-CW	220-240V AC	30	3060	4,5

*\*Power and lumen values measured with cool white (CW).*

## C Light Color Options

● WW: Warm White	3000K
● NW: Natural White	4000K
● CW: Cold White	6500K

## O Lens Options



XN: Extra Narrow Angle

M: Medium Angle

W: Wide Angle

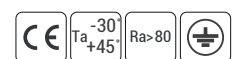
## G Housing Color Options

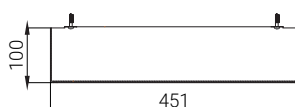


RAL9016

RAL9007

RAL9005





- Surface Mounted LED Panel
- Electrostatic painted DKP body
- Homogeneous light-emitting diffuser
- Suitable for surface-mounted use

## P W Product & Power Options

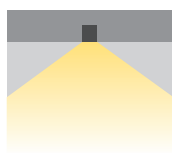
Product Name	Light Color	Input Voltage (V)	Power (W/mt)	Luminous (lm)	Weight (kg)
PNLS 45x45	WW-NW-CW	220-240V AC	25	2500	-

\*Power and lumen values measured with cool white (CW).

## C Light Color Options

● WW: Warm White	3000K
● NW: Natural White	4000K
● CW: Cold White	6500K

## O Lens Options

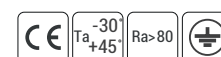


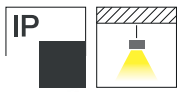
XW: Without lens

## G Housing Color Options

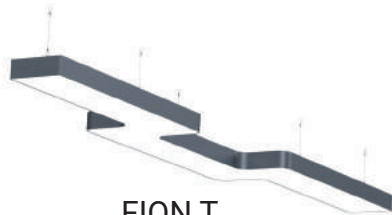
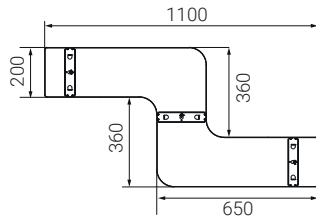


RAL9005    RAL9007    RAL9016

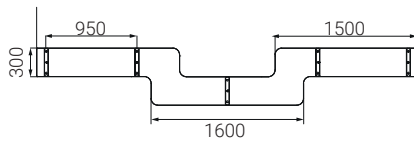




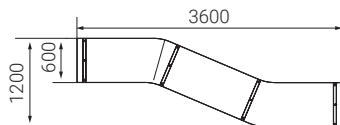
FION N



FION T



FION Z



- Decorative Pendant Luminaire
- Electrostatic powder-coated aluminum extrusion body
- Polycarbonate luminaire glass
- Stainless fittings
- Suitable for pendant use

## P W Product & Power Options

Product Name	Light Color	Input Voltage (V)	Power (W/mt)	Luminous (lm)	Dimensions (mm)	Weight (kg)
FION N	WW-NW-CW	24V DC	60	4.500	200x1100	9,5
FION T	WW-NW-CW	24V DC	180	13.500	300x4000	13,2
FION Z	WW-NW-CW	24V DC	240	16.800	600x3600	16,5

\*Power and lumen values measured with cool white (CW).

## C Light Color Options

● WW: Warm White	3000K
● NW: Natural White	4000K
● CW: Cold White	6500K

## O Lens Options

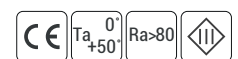


XW: Without lens

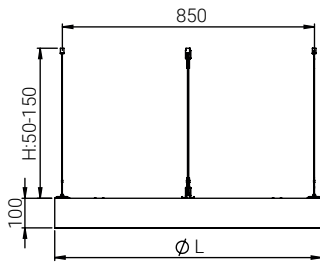
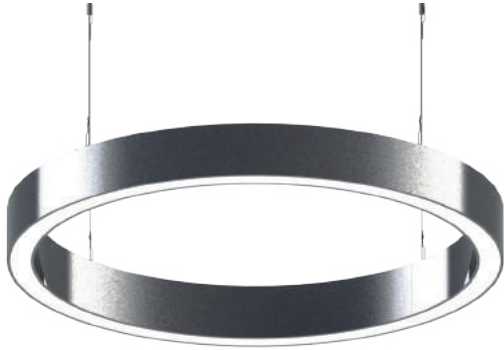
## G Housing Color Options



01: Eloskali RAL9005 RAL9007 RAL9016



IP  
40



- Direct and indirect decorative pendant luminaires
- Aluminum extrusion profile
- High-efficiency plexiglass cover
- Suitable for pendant use
- 90, 120, 150 and 180 cm dimensions as standard
- Suitable for indoor use

## P W Product & Power Options

Product Name	Light Color	Input Voltage (V)	Power (W/mt)	Luminous (lm)	Weight (kg)
BLZS D+E 90	WW-NW-CW	24V DC	80	6200	6
BLZS D+E 120	WW-NW-CW	24V DC	105	8000	8
BLZS D+E 150	WW-NW-CW	24V DC	140	10800	10,5
BLZS D+E 180	WW-NW-CW	24V DC	180	13250	13

*\*Power and lumen values measured with cool white (CW).*

## C Light Color Options

● WW: Warm White	3000K
● NW: Natural White	4000K
● CW: Cold White	6500K

## O Lens Options



XW: Without lens

## G Housing Color Options



RAL9016

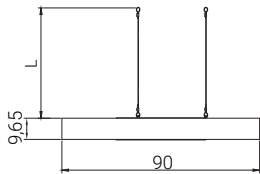
RAL9007

RAL9005

01:ELOKSAL



IP  
40



- Outside: Ø90cm - Inside: Ø40cm
- Aluminum extrusion profile
- High-efficiency homogeneous plexiglass cover
- Stainless fittings
- Suitable for indoor use

## P W Product & Power Options

Product Name	Light Color	Input Voltage (V)	Power (W/mt)	Luminous (lm)	Weight (kg)
BLZ-LOTUS	WW-NW-CW	24VDC	75	6750	7,3

\*Power and lumen values measured with cool white (CW).

## C Light Color Options

● WW: Warm White	3000K
● NW: Natural White	4000K
● CW: Cold White	6500K

## O Lens Options

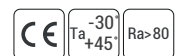


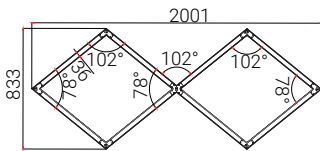
XW: Without lens

## G Housing Color Options



RAL9005 RAL9007 RAL9016





- Modular decorative pendant luminaire
- Aluminum extrusion profile
- High-efficiency homogeneous plexiglass cover
- Stainless fittings
- Suitable for indoor use

## P W Product & Power Options

Product Name	Light Color	Input Voltage (V)	Power (W/mt)	Luminous (lm)	Weight (kg)
BLZS-BAKLAVA	WW-NW-CW	24VDC	30	2400	7,5
BLZS-BAKLAVA	WW-NW-CW	24VDC	40	3200	7,5

\*Power and lumen values measured with cool white (CW).

## C Light Color Options

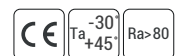
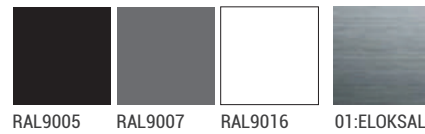
● WW: Warm White	3000K
● NW: Natural White	4000K
● CW: Cold White	6500K

## O Lens Options

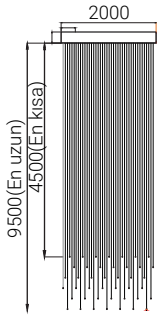


XW: Without lens

## G Housing Color Options



IP  
40



- Decorative luminaire with fiber optic application
- Aluminum extrusion profile
- High efficiency homogeneous plexiglass cover
- Optional fiber optic packages
- Stainless fittings
- Suitable for indoor use

## P W Product & Power Options

Product Name	Light Color	Input Voltage (V)	Power (W/mt)	Luminous (lm)	Weight (kg)
BLZ FO	WW-NW-CW	220-240V AC	50	-	14

\*Power and lumen values measured with cool white (CW).

## C Light Color Options

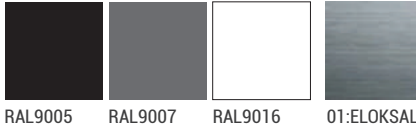
● WW: Warm White	3000K
● NW: Natural White	4000K
● CW: Cold White	6500K

## O Lens Options

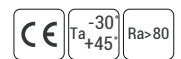


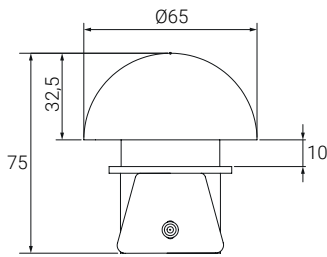
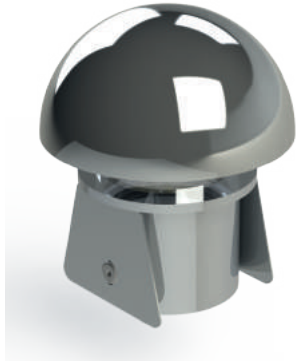
XW: Without lens

## G Housing Color Options



RAL9005 RAL9007 RAL9016 01:ELOKSAL





- Indirect Pixel Dot
- Shiny chrome plated top cover
- Aluminum body
- Plexi inner cover
- Suitable for indoor use

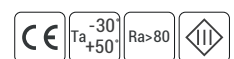
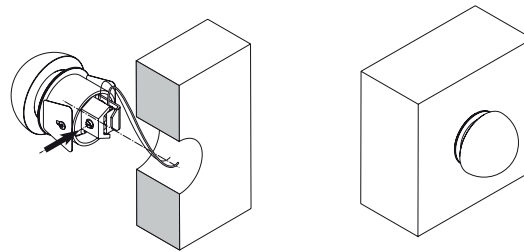
## P W Product & Power Options

Product Name	Light Color	Input Voltage (V)	Power (W/mt)	Luminous (lm)	Weight (kg)
CDMNT DMX	RGB	24V DC	2	150	0,4

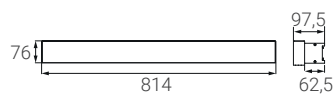
## C Light Color Options



## Mounting Method







- One or two-way linear wall sconce
- Aluminum extrusion profile
- Metal side covers
- UV protected polycarbonate top cover
- Wall mounting usage

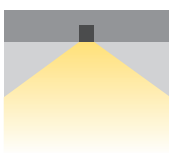
## P W Product & Power Options

Product Name	Light Color	Input Voltage (V)	Power (W/mt)	Luminous (lm)	Weight (kg)
EPL35 Single	WW-NW-CW	220-240V AC	10	900	1,9
EPL35 Double	WW-NW-CW	220-240V AC	20	1.800	2,2

## C Light Color Options

● WW: Warm White	3000K
● NW: Natural White	4000K
● CW: Cold White	6500K

## O

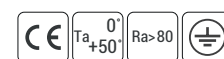


XW: Without lens

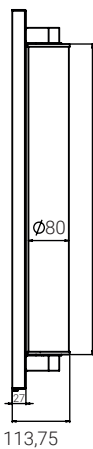
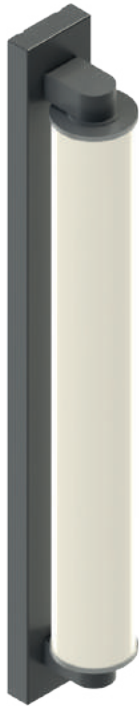
## G



01: Elokstal RAL9005 RAL9007 RAL9016



IP  
44



- Matt chrome body
- High-efficiency homogeneous plexiglass Pipe
- Stainless fittings
- Suitable for indoor use

## P W Product & Power Options

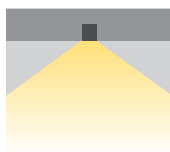
Product Name	Light Color	Input Voltage (V)	Power (W/mt)	Luminous (lm)	Weight (kg)
SCONCE	WW-NW-CW	220-240V AC	45	4000	2,1

*\*Power and lumen values measured with cool white (CW).*

## C Light Color Options

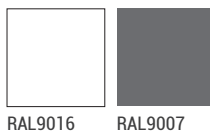
● WW: Warm White	3000K
● NW: Natural White	4000K
● CW: Cold White	6500K

## O Lens Options



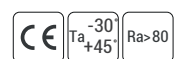
XW: Without lens

## G Housing Color Options

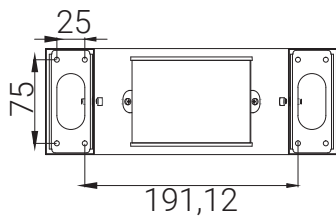
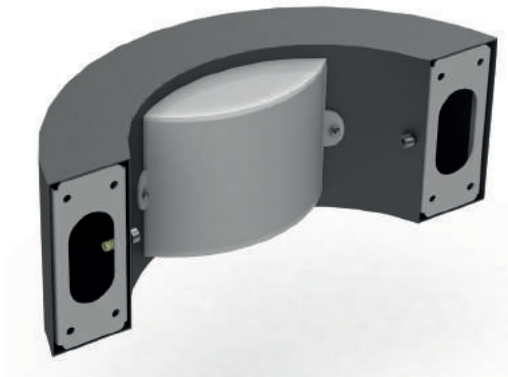


RAL9016

RAL9007



IP  
65



- Indirect wall sconce
- Electrostatic painted DKP body
- PC armature cover
- Stainless fittings
- Suitable for outdoor use

## P W Product & Power Options

Product Name	Light Color	Input Voltage (V)	Power (W/mt)	Luminous (lm)	Weight (kg)
GLORIA	WW-NW-CW	220-240V AC	18	960	0,9

\*Power and lumen values measured with cool white (CW).

## C Light Color Options

● WW: Warm White	3000K
● NW: Natural White	4000K
● CW: Cold White	6500K

## O Lens Options

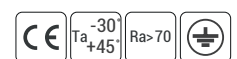


XW: Without lens

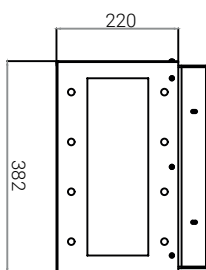
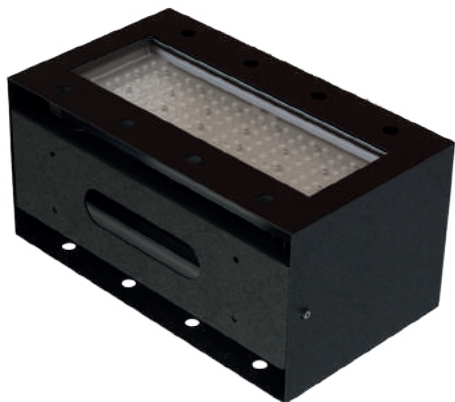
## G Housing Color Options



RAL9005 RAL9007 RAL9016



IP 66 IK 07 IK 10



- High strength wall and column sconce
- Electrostatic painted DKP body
- Aluminum extrusion cooler body
- PC luminaire glass
- Stainless fittings
- Wall mount

## P W Product & Power Options

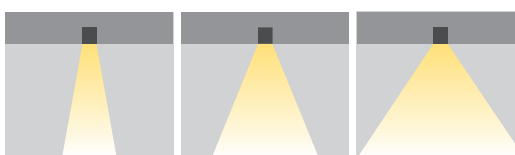
Product Name	Light Color	Input Voltage (V)	Power (W/mt)	Luminous (lm)	Weight (kg)
WS APLIK DOUBLE	WW-NW-CW	220-240V AC	50	6200	4,5
WS APLIK DOUBLE	WW-NW-CW	220-240V AC	100	12973	6,8
WS APLIK DOUBLE	WW-NW-CW	220-240V AC	150	19600	9,1

\*Power and lumen values measured with cool white (CW).

## C Light Color Options

● WW: Warm White	3000K
● NW: Natural White	4000K
● CW: Cold White	6500K

## O Lens Options



XN: Extra Narrow Angle

M: Medium Angle

W: Wide Angle

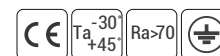
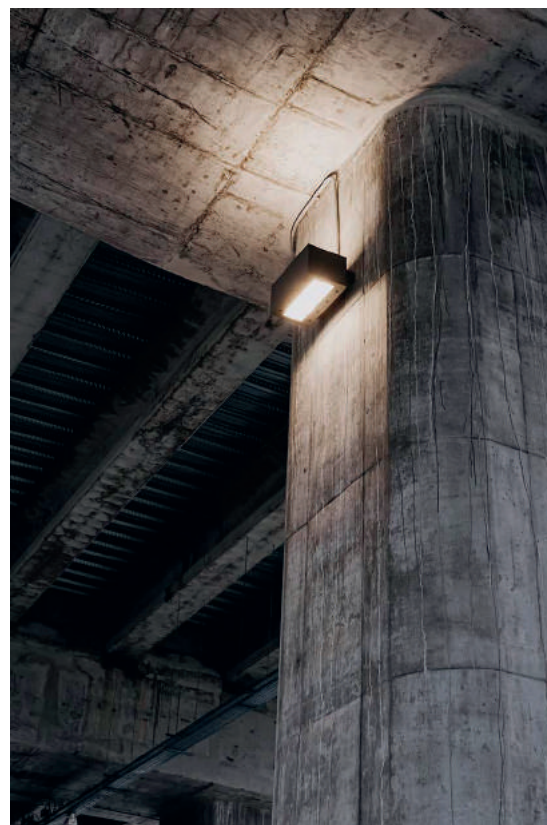
## G Housing Color Options

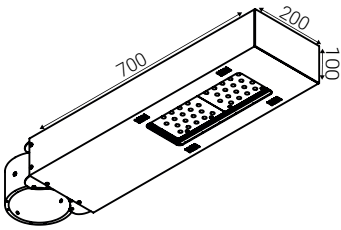
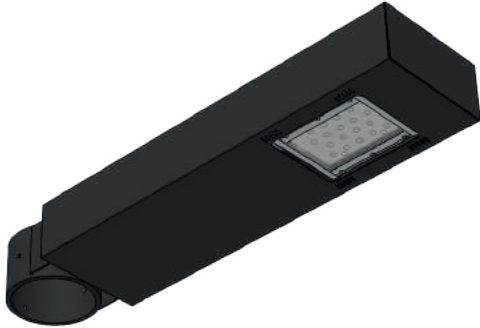


RAL9005

RAL9007

RAL9016





- Electrostatic powder-coated DKP Box body
- PC efficient group lens
- Customizable mounting dimensions
- Stainless fittings
- Suitable for outdoor use

## P W Product & Power Options

Product Name	Light Color	Input Voltage (V)	Power (W/mt)	Luminous (lm)	Weight (kg)
SPL-NEC	WW-NW-CW	220-240V AC	50	5820	3,6
SPL-NEC	WW-NW-CW	220-240V AC	75	8700	5,1

\*Power and lumen values measured with cool white (CW).

## C Light Color Options

● WW: Warm White	3000K
● NW: Natural White	4000K
● CW: Cold White	6500K

## O Lens Options



N: Narrow Angle

M: Medium Angle

W: Wide Angle

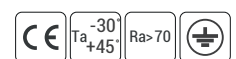
## G Housing Color Options

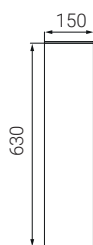
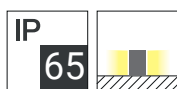


RAL9005

RAL9007

RAL9016





- Electrostatic powder-coated aluminum extrusion body
- Polycarbonate luminaire glass
- Stainless fittings
- Suitable for outdoor use

## P W Product & Power Options

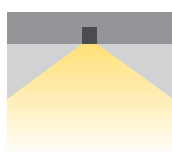
Product Name	Light Color	Input Voltage (V)	Power (W/mt)	Luminous (lm)	Weight (kg)
CB-TWIN	WW-NW-CW	220-240V AC	24	1.920	6,0

\*Power and lumen values measured with cool white (CW).

## C Light Color Options

● WW: Warm White	3000K
● NW: Natural White	4000K
● CW: Cold White	6500K

## O Lens Options

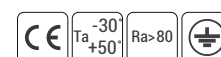


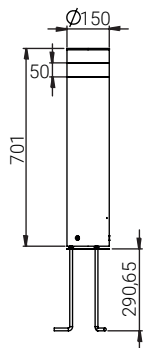
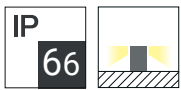
XW: Without lens

## G Housing Color Options



RAL9005 RAL9007 RAL9016





- Red-Green Color Warning Light with an integrated system
- Audible Warning Feature
- Electrostatic powder-coated aluminum extrusion body
- Asymmetric acrylic lens
- Stainless fittings
- Suitable for outdoor use

## P W Product & Power Options

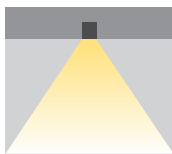
Product Name	Light Color	Input Voltage (V)	Power (W/mt)	Luminous (lm)	Weight (kg)
CBC100-IKAZ	WW-NW-CW	24V DC	12	700	2,7

\*Power and lumen values measured with cool white (CW).

## C Light Color Options

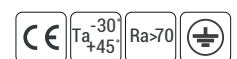


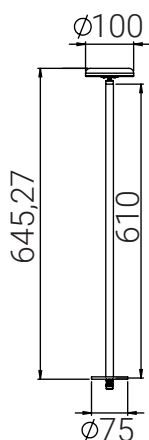
## O Lens Options



W: Wide Angle

## G Housing Color Options





- Electrostatic powder-coated aluminum tube body
- Angle adjustable head
- High efficiency homogeneous plexiglass cover
- Stainless fittings
- Suitable for outdoor use

## P W Product & Power Options

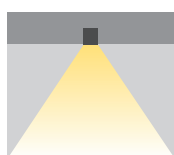
Product Name	Light Color	Input Voltage (V)	Power (W/mt)	Luminous (lm)	Weight (kg)
BILLET 100	WW-NW-CW	7,5-24V DC	6	480	1,8

\*Power and lumen values measured with cool white (CW).

## C Light Color Options

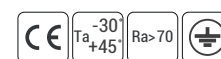
● WW: Warm White	3000K
● NW: Natural White	4000K
● CW: Cold White	6500K

## O Lens Options



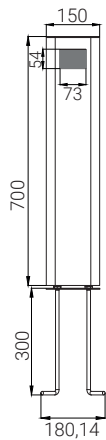
W: Wide Angle

## G Housing Color Options





IP  
66



- Aluminum profile body
- Angled asymmetric acrylic diffuser
- Stainless fittings
- Suitable for outdoor use

## P W Product & Power Options

Product Name	Light Color	Input Voltage (V)	Power (W/mt)	Luminous (lm)	Weight (kg)
CBSGEN-150	WW-NW-CW	220-240V AC	12	1140	5,5

\*Power and lumen values measured with cool white (CW).

## C Light Color Options

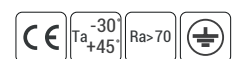
● WW: Warm White	3000K
● NW: Natural White	4000K
● CW: Cold White	6500K

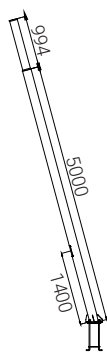
## O Lens Options



W: Wide Angle

## G Housing Color Options





- Inclined decorative lighting pole
- Electrostatic painted DKP body
- 15 Degree Inclined Design
- PC armature cover
- Stainless fittings
- Suitable for outdoor use

**P W** Product & Power Options

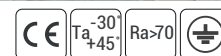
Product Name	Light Color	Input Voltage (V)	Power (W/mt)	Luminous (lm)	Weight (kg)
SPFE	WW-NW-CW	12-24VDC	10	1.000	1,1
SPFE	WW-NW-CW	12-24VDC	10	1.000	1,1

\*Power and lumen values measured with cool white (CW).

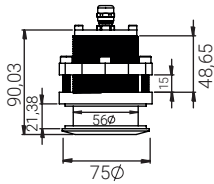
**C** Light Color Options

● WW: Warm White	3000K
● NW: Natural White	4000K
● CW: Cold White	6500K

**G** Housing Color Options



IP  
68



- Under-boat lighting fixture
- High Hard Corrosion Resistant 6013ALM Body
- Adjustable inner mounting tube
- Underwater joint
- H05RNF rubber cable
- Suitable for outdoor use

## P W Product & Power Options

Product Name	Light Color	Input Voltage (V)	Power (W/mt)	Luminous (lm)	Weight (kg)
ACK1	WW-NW-CW	9-24VDC	4,6	345	0,9
ACK1	R-G-B	9-24VDC	4	-	0,9

\*Power and lumen values measured with cool white (CW).

## C Light Color Options

● WW: Warm White	3000K	● R: Red	625nm
● NW: Natural White	4000K	● G: Green	525nm
● CW: Cold White	6500K	● B: Blue	465nm

## O Lens Options

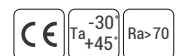
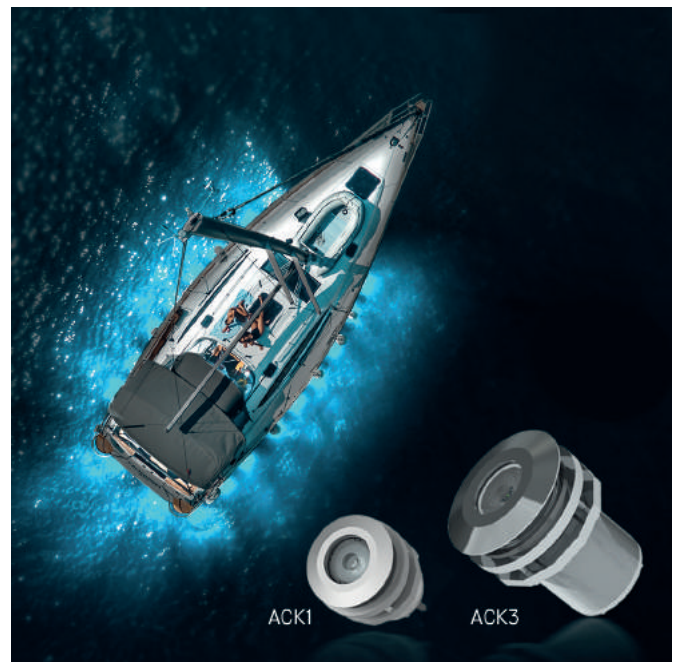


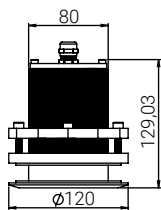
N: Narrow Angle

## G Housing Color Options



RAL9016 RAL9007 RAL9005





- Under-boat lighting fixture
- High Hard Corrosion Resistant 6013ALM Body
- Adjustable inner mounting tube
- Underwater joint
- H05RNF rubber cable
- Suitable for outdoor use

**P W** Product & Power Options

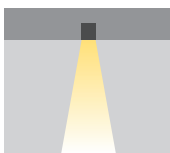
Product Name	Light Color	Input Voltage (V)	Power (W/mt)	Luminous (lm)	Weight (kg)
ACK3	WW-NW-CW	9-24VDC	10	800	1,6
ACK3	R-G-B	9-24VDC	9	-	1,6

\*Power and lumen values measured with cool white (CW).

**C** Light Color Options

● WW: Warm White	3000K	● R: Red	625nm
● NW: Natural White	4000K	● G: Green	525nm
● CW: Cold White	6500K	● B: Blue	465nm

**O** Lens Options

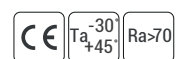
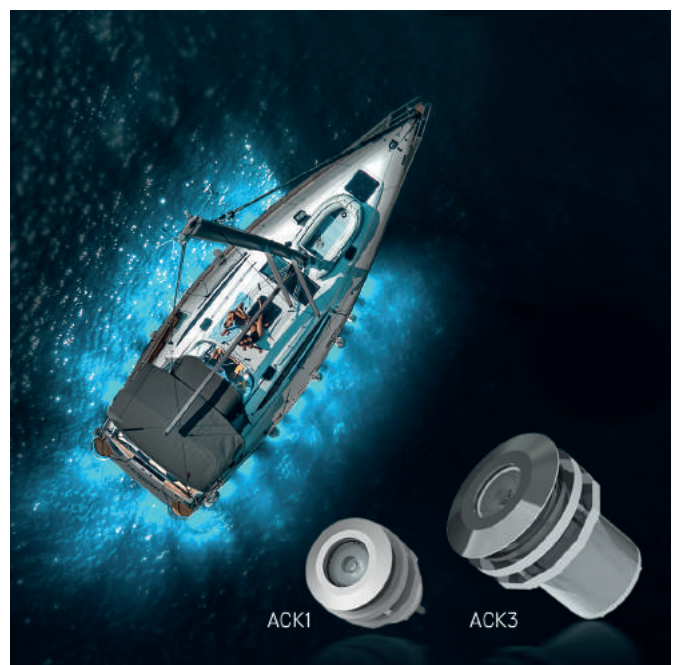


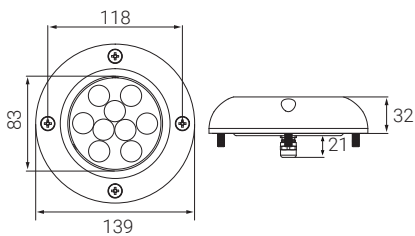
N: Narrow Angle

**G** Housing Color Options



RAL9005 RAL9007 RAL9016





- 316L chrome body
- Transparent plexiglass armature glass
- Stainless connection screws
- Underwater additional bell
- H05RNF rubber cable

## P W Product & Power Options

Product Name	Light Color	Input Voltage (V)	Power (W/mt)	Luminous (lm)	Weight (kg)
AC3M	WW-NW-CW	12-24V DC	10	1.000	1,1

\*Power and lumen values measured with cool white (CW).

## C Light Color Options

● WW: Warm White	3000K	● R: Red	625nm
● NW: Natural White	4000K	● G: Green	525nm
● CW: Cold White	6500K	● B: Blue	465nm
● RGB		● A: Amber	590nm

## S Driver Options

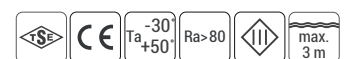
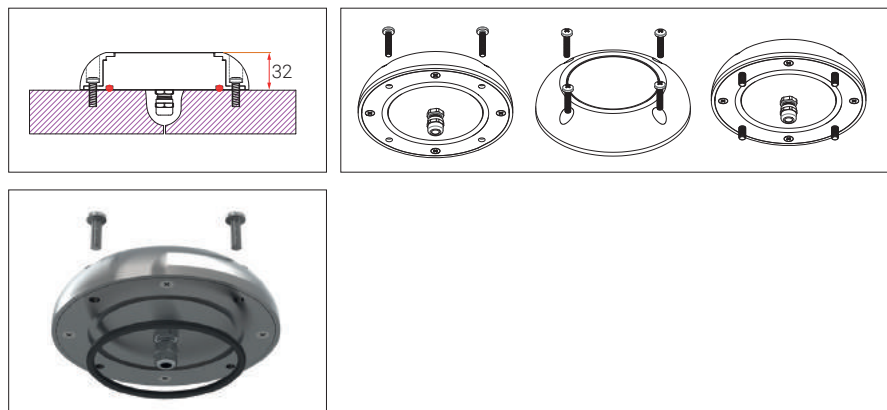
- 01 Standart (ON/OFF)
- 02 PWM-DIM
- 03 Invert PWM-DIM

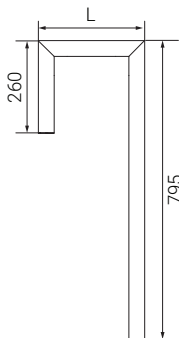
## O Lens Options



XN: Extra Narrow Angle    N: Narrow Angle    W: Wide Angle    XW: Without lens

## Mounting Type





- Anodized aluminum extrusion profile
- Plexiglass cover with homogeneous light output
- Suitable for outdoor use

## P W Product & Power Options

Product Name	Light Color	Input Voltage (V)	Power (W/mt)	Luminous (lm)	Weight (kg)
Wall-U	WW-NW-CW	220-240V AC	25	2.100	10

\*Power and lumen values measured with cool white (CW).

## C Light Color Options

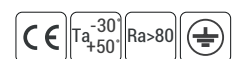
● WW: Warm White	3000K
● NW: Natural White	4000K
● CW: Cold White	6500K

## O Lens Options

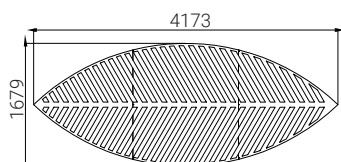


XW: Without lens

## G Housing Color Options



IP 65



- Electrostatic painted DKP body
- High-efficiency homogeneous plexiglass cover
- Stainless fittings
- Custom size compatibility according to preference
- Suitable for Indoor Use

## P W Product & Power Options

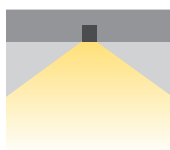
Product Name	Light Color	Input Voltage (V)	Power (W/mt)	Luminous (lm)	Weight (kg)
LEAF	WW-NW-CW	24VDC	20	900	-

\*Power and lumen values measured with cool white (CW).

## C Light Color Options

● WW: Warm White	3000K
● NW: Natural White	4000K
● CW: Cold White	6500K

## O Lens Options

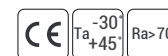
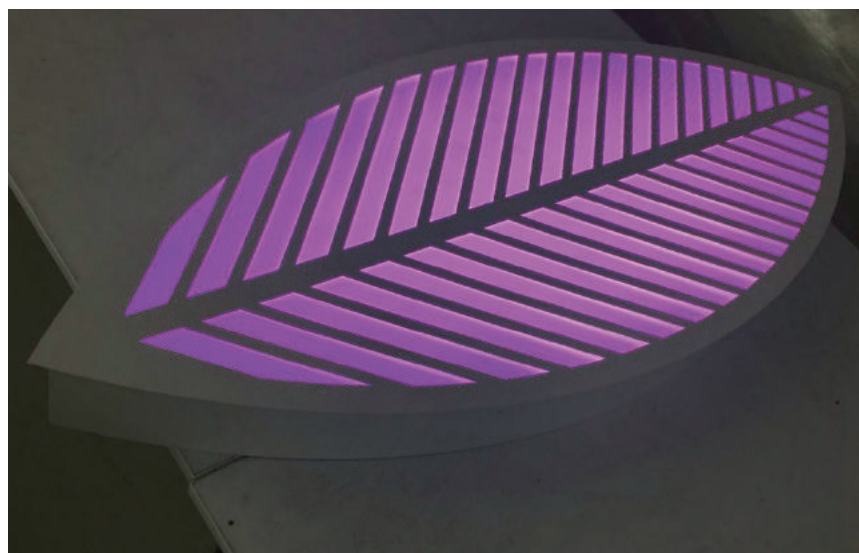


XW: Without lens

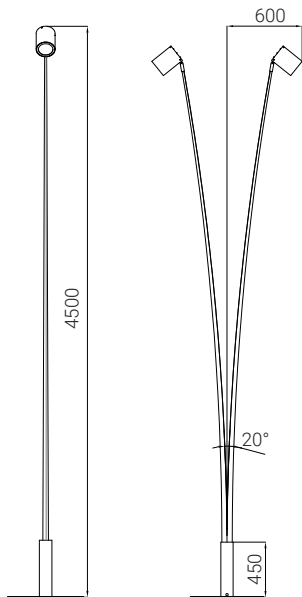
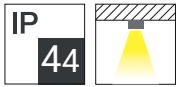
## G Housing Color Options



RAL9016







- Electrostatic powder-coated aluminum frame and body
- Plexiglass cover with homogeneous light output
- Stainless connection screws
- Suitable for indoor use

## P W Product & Power Options

Product Name	Light Color	Input Voltage (V)	Power (W/mt)	Luminous (lm)
LAMP O	WW-NW-CW	220-240V AC	35x2	7.000

\*Power and lumen values measured with cool white (CW).

## C Light Color Options

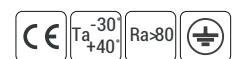
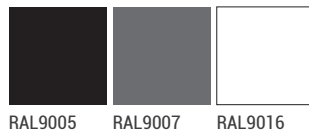
● WW: Warm White	3000K
● NW: Natural White	4000K
● CW: Cold White	6500K

## O Lens Options



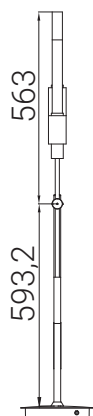
M: Medium Angle

## G Housing Color Options





IP  
44



- Special coated stainless body
- Glass top cover with homogeneous light output
- Movable body
- Stainless connection screws
- Suitable for indoor use



## P W Product & Power Options

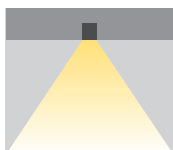
Product Name	Light Color	Input Voltage (V)	Power (W/mt)	Luminous (lm)	Weight (kg)
LAMP U	WW-NW-CW	220-240V AC	10	560	-

\*Power and lumen values measured with cool white (CW).

## C Light Color Options

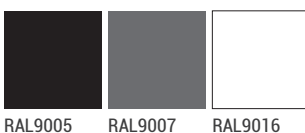
● WW: Warm White	3000K
● NW: Natural White	4000K
● CW: Cold White	6500K

## O Lens Options

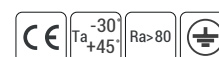


W: Wide Angle

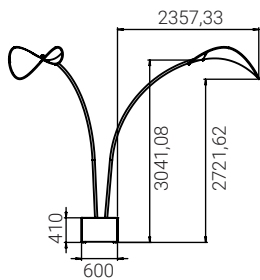
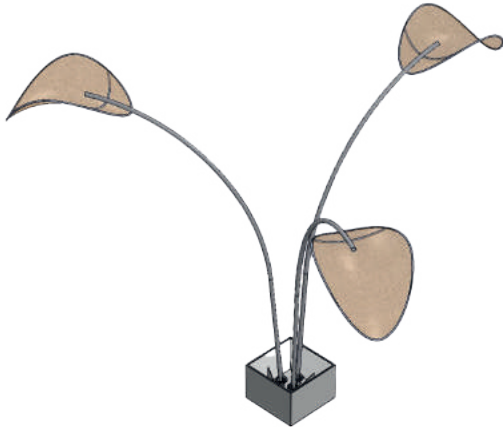
## G Housing Color Options



RAL9005 RAL9007 RAL9016



IP  
40



- Electrostatic painted aluminum body
- High efficiency closed mesh lighting
- Stainless fittings
- Suitable for indoor use

## P W Product & Power Options

Product Name	Light Color	Input Voltage (V)	Power (W/mt)	Luminous (lm)	Weight (kg)
VASE	WW-NW-CW	220-240V AC	150	6600	25

\*Power and lumen values measured with cool white (CW).

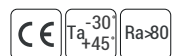
## C Light Color Options

● WW: Warm White	3000K
● NW: Natural White	4000K
● CW: Cold White	6500K

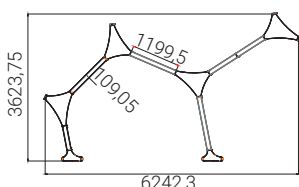
## G Housing Color Options



Please contact our sales represent a tives for special application request so ther than the standard product.



IP  
65



- Camel figured modular wall fixture
- Aluminum extrusion profile
- High-efficiency homogeneous plexiglass diffuser
- Stainless fittings
- Suitable for outdoor use

## P W Product & Power Options

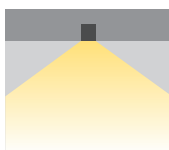
Product Name	Light Color	Input Voltage (V)	Power (W/mt)	Luminous (lm)	Weight (kg)
K-S - L-DEVE	WW-NW-CW	24VDC	25	1625	1,8
K-S - L-DEVE	WW-NW-CW	24VDC	35	2100	1,1

\*Power and lumen values measured with cool white (CW).

## C Light Color Options

● WW: Warm White	3000K
● NW: Natural White	4000K
● CW: Cold White	6500K

## O Lens Options

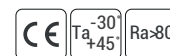


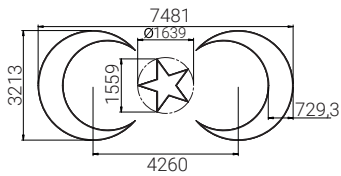
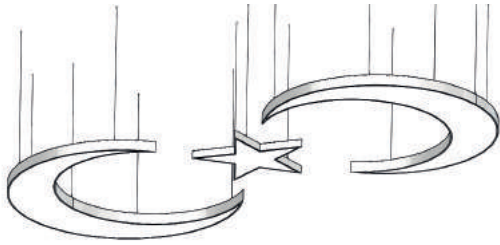
XW: Without lens

## G Housing Color Options



RAL9007





- Electrostatic painted DKP body
- High-efficiency homogeneous plexiglass cover
- Stainless fittings
- Suitable for Indoor Use

## P W Product & Power Options

Product Name	Light Color	Input Voltage (V)	Power (W/mt)	Luminous (lm)	Weight (kg)
AY	WW-NW-CW	24V DC	185	12260	10
YILDIZ	WW-NW-CW	24V DC	100	8000	8

\*Power and lumen values measured with cool white (CW).

## C Light Color Options

- WW: Warm White 3000K
- NW: Natural White 4000K
- CW: Cold White 6500K

## O Lens Options

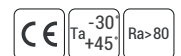


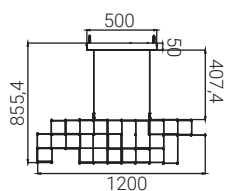
XW: Without lens

## G Housing Color Options



RAL9016 RAL9007 RAL9005 01:ELOKSAL





- Chrome body with matt gold alloy plated
- Internal drive
- Stainless fittings
- Suitable for indoor use

## P W Product & Power Options

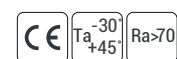
Product Name	Light Color	Input Voltage (V)	Power (W/mt)	Luminous (lm)	Weight (kg)
GALAXY	WW-NW-CW	220-240V AC	90	2070	15
GALAXY	WW-NW-CW	220-240V AC	150	3450	16

\*Power and lumen values measured with cool white (CW).

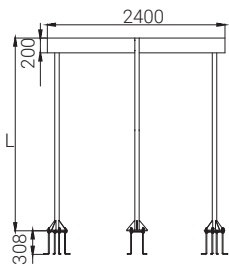
## C Light Color Options

● WW: Warm White	3000K
● NW: Natural White	4000K
● CW: Cold White	6500K

## G Housing Color Options



IP  
65



- Electrostatic powder-coated aluminum body
- Polycarbonate colored light refracting plexiglass
- Aluminum plastered conical base/closure
- Stainless fittings

## P W Product & Power Options

Product Name	Light Color	Input Voltage (V)	Power (W/mt)	Luminous (lm)	Weight (kg)
SHADE	WW-NW-CW-RGB	24V DC	120	-	-

\*Power and lumen values measured with cool white (CW).

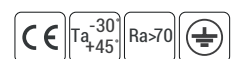
## C Light Color Options

● WW: Warm White	3000K	● R: Red	625nm
● NW: Natural White	4000K	● G: Green	525nm
● CW: Cold White	6500K	● B: Blue	465nm
		● A: Amber	590nm

## G Housing Color Options

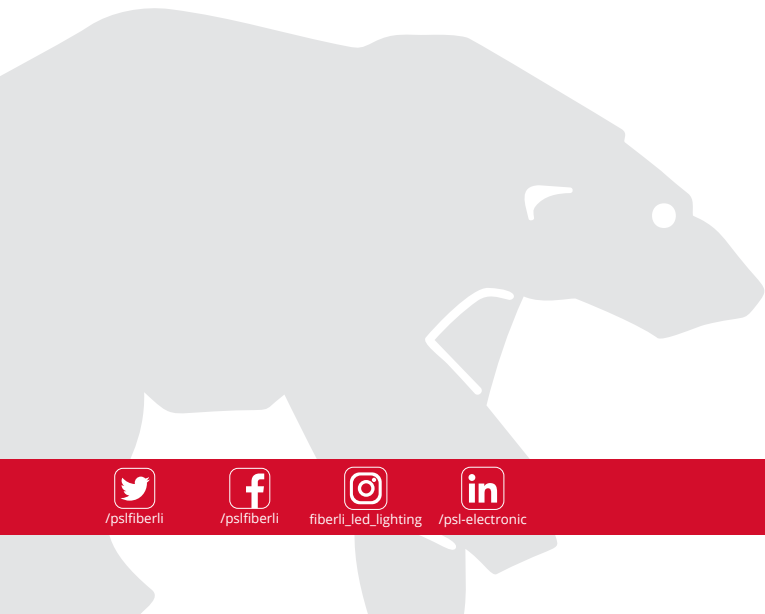


Please contact our sales represent a tives for special application request so ther than the standard product.





TecoLED



/pslfiberli



/pslfiberli



fiberli\_led\_lighting



/psl-electronic

[www.fiberli.com](http://www.fiberli.com)